

# styleathome

FAMILY-  
STYLE  
Recipes  
for  
Fall

50+  
PAGES  
OF HOMES  
WITH  
HEART

*From Small-Town Vintage  
to Urban Sophistication*

A handy shelf  
makes room for a grace  
note from nature.

## DREAM BATHROOM

# Escapes



**BEHR**   
**DYNASTY**

ADVANCED STAIN REPELLENCY  
ONE-COAT HIDE GUARANTEED\*  
SCUFF & MAR RESISTANT

INTERIOR  
MATTE  
STAIN-BLOCKING  
PAINT & PRIMER\*

See product label or visit [behr.ca/behrdynasty](http://behr.ca/behrdynasty) for more details. BEHR was voted the Most Trusted Brand™ of Interior and Exterior Paint according to the 2021 Reader's Digest Trusted Brand™ survey. \*Trusted Brand is a registered trademark of Reader's Digest. Wall colour: Juniper Berries PPU13-02





# GIVE YOUR WALLS OUR BEST

**INTRODUCING BEHR DYNASTY™**

Our most stain repellent, scuff resistant, fast-drying,  
one-coat coverage paint. Now all in one can.

**BEHR**   
TODAY LET'S PAINT™



## *Plan Your Great Escape*

Has your relationship with your home changed over these pandemic times? Mine has. It's always been a place to escape from the stresses of "the outside world." I've never needed that more, and I think that's the case for a number of our readers. But the home has also become a place of work for many, which can challenge its status as a refuge. Maybe that's why the bathroom has become even more of a sanctuary. It's at least one room that's safe from the intrusion of work!

In this issue, we take a deep dive into dreamy bathrooms. Every bathroom we feature in "Escape Rooms" (page 26) is entirely unique – a true manifestation of the owner's highly personal idea of what refuge means to them. Each was designed by a professional designer. I mention this because while I applaud do-it-yourselfers at every turn, I tend to bow before the experts when it comes to bathroom renovations. This tiny room has to work hard, stand up to intensive daily use and, of course, be beautiful! Designers know the tricks, and they know the trades. I trust them to handle this job. We also take a peek at jewel-like powder rooms in "Powerful Powder Rooms" (page 42). Most designers agree this is the room where it's okay to take a walk on the wild side, and we feature some gems that won't disappoint on that front!

Lastly, once again, we are fortunate to have been invited into stunning homes – city and small-town properties that are sure to inspire. Each is so different from the other that this issue truly offers something for everyone. I am sure you'll agree.

✉ [veronique.leblanc@tva.ca](mailto:veronique.leblanc@tva.ca) **f** [facebook.com/styleathome](https://facebook.com/styleathome)  
**t** [@styleathome](https://twitter.com/styleathome) **i** [instagram.com/styleathome](https://instagram.com/styleathome)



If you are feeling exhausted and in need of revitalization, you should consider a detox or cleanse. With Active Liver™ you have the tool to do this gently and on a daily basis.

# Detox your body - all year long

Each day, our liver is working hard to remove waste products and toxins from processed foods, unclean air, water and even our own body. But as we get exposed to increasingly more toxins, the liver struggles to remove them all and can start storing them in our body fat.

We quickly may notice the results in our energy levels, in our lack of youthful appearance – and surprisingly, on our waistlines.

## UNJUNKING YOUR BODY

A detox, like a water or juice fast, is an excellent way to rid the body of stored toxins, but it

is often difficult to abide by, and involves days or even weeks of feeling tired and sick. However, there are other ways.

## DETOX WITH ONE TABLET A DAY

Active Liver™ is a dietary supplement that helps promote a healthy liver and helps you detox on a daily basis – all year round. With just one tablet a day, it gently but effectively uses known herbal extracts to facilitate detoxing of the body –without the “side effects”.



## The Liver & Your Waistline

The liver is an important fat burning organ. If the liver is sluggish or clogged with waste material, it can start building up around the waistline, and even inside the internal organs (which may lead to a fatty liver). Making sure your liver is working well will help you flush fats from the body.

Results may vary. Always read and follow instructions prior to use.



## TEST YOURSELF

	YES	NO
I suffer from headaches or brain fog	<input type="radio"/>	<input type="radio"/>
I have a hard time losing weight	<input type="radio"/>	<input type="radio"/>
I have indigestion & bloating	<input type="radio"/>	<input type="radio"/>
I'm tired all the time	<input type="radio"/>	<input type="radio"/>
My skin itches and I see brown spots	<input type="radio"/>	<input type="radio"/>
My tongue is coated	<input type="radio"/>	<input type="radio"/>

Does this sound like you? Then try Active Liver as a help to promote your liver health.



For Information & Advice:

CALL US:  
1-877-696-6734

ONLINE SHOP:  
newnordic.ca

# styleathome

OCTOBER 2021



90

## HOMES

### 48 TIME FOR CHANGE

A handsome city home trades fussy traditional details for timeless transitional appeal.

### 58 THEORY OF EVOLUTION

A natural selection of textures and materials give lived-in comfort to a main floor waiting to be loved.

### 66 THE NEW WEST

Design innovators Aly Velji and Katie Nelson take a home from empty to exceptional.

### 78 CHIC SUITE

Light, bright and a touch of glam was the design direction that took this condo from dark and dated to fresh and feminine.

### 90 LABOUR OF LOVE

Perched on a hill in picturesque Paris, Ont., an 1883 house gets a redo for the ages.

## COLUMNS

### 9 STYLE NEWS

The best home decor products, the hottest trends and the most inspiring ideas.

### 14 HIGH OR LOW

Two posh, plush living rooms: one keeps you flush with cash, the other has a price tag that'll make you blush. Which is which?

### 20 DESSERT OF THE MONTH

A little pot of delicious is all you need to round out a cozy fall meal *en famille*.

### 24 INSIDER'S VIEW

Benjamin Ouellette gives expert advice on designing the ensuite of your dreams.



66



20

Pass the pudding!  
Adorable individual  
size puddings round  
out a cozy  
family dinner.



42



26

100

Dukkah Trout with Hummus and Tomato Mint Chutney packs a world of flavour into one delish dish.



## DECORATING

### 18 CELEBRATE IN COLOUR

Designer Michelle Hurley's relaxed take on Thanksgiving decor uses a mix of old and new, high and low, and playful colour.

## SPECIAL

### 26 ESCAPE ROOMS

These five luxurious bathrooms capture each owner's vision of a personal sanctuary. Which one will inspire the design of your next great escape?

### 38 LAUNDRY ROOMS THAT WORK

Say goodbye to dark basement laundry rooms and hello to bright, organized spaces where you actually want to be.

### 42 POWERFUL POWDER ROOMS

With a tight design concept and a bit of daring, you can make a big impression in the tiniest room in the house.

### 46 SHOPPING BATHROOMS

Get a luxe loo with these budget-friendly finds that bring a touch of indulgence to your daily routine.

## FOOD

### 100 FALL FEASTING, FAMILY-STYLE

*Hearth & Home: Cook, Share and Celebrate Family-Style* is your must-have cookbook this fall. Some of the recipes by chefs Lynn Crawford and Lora Kirk are ideal for easy weeknights, others are best for weekend gatherings. Our preview will help you prep your own family-style fall feast!

## REGULARS

FROM OUR EDITOR 4

WORKBOOK 104

SPOTLIGHT 106



### ON THE COVER

Emilia Wisniewski created this exquisite, luxurious escape in her client's Toronto condo.

### COVER PHOTOGRAPHY

Valerie Wilcox

# styleathome

## at your service

As a *Style at Home* subscriber, you can expect the best in subscription service. If you have any questions about your subscription, please get in touch with us at the website, phone number or address listed below. In order to help us locate your file, please provide your current mailing label or the information on it.

**SUBSCRIPTION EXPIRY** To find out when your current subscription expires, check the mailing label. The labels are printed several weeks before the issue is mailed, so please give us six to eight weeks advance notice for renewals and changes of address in order to avoid missing an issue.

**BILLING & RENEWAL NOTICES** Invoice and renewal notices are printed one week before they're mailed to you. With delivery time, it's possible that your payment or renewal order will cross in the mail with our invoice or renewal notice. If you receive yet another invoice or notice, please contact us immediately.

#### WRAPPER/PERFUME STRIP

We occasionally mail your issue in a protective wrapper and/or insert a perfume strip in the magazine. If you'd rather receive the magazine without a wrapper or a strip, please let us know.

**PRIVACY POLICY** On occasion, we make our subscriber list available to carefully screened organizations whose products or services might be of interest to you. If you prefer to have your name and postal address removed from this list, please contact us. For the complete privacy policy, please view Privacy Policy at [styleathome.com](http://styleathome.com).

MAIL STYLE AT HOME, P.O. Box 814,  
Markham Station, Markham, ON L3P 7Z6  
CALL 1-800-387-6332  
Complete subscriber services are available  
online at [styleathome.com](http://styleathome.com).

# styleathome

VOLUME 24 ISSUE 07

**Vice-President, TVA Publications** Lyne Robitaille  
**Publisher, Monthly Magazines** Martine Aubin  
**Publication Director** Véronique Leblanc  
**Art Director** Isabelle Dubuc  
**Features Editor** Kathleen Dore  
**Copy Editors** Katie Moore, Jennifer Krissilas  
**Contributing Editor** Karl Lohnes

ONE EASY WAY TO REACH US: [FIRSTNAME.LASTNAME@TVA.CA](mailto:FIRSTNAME.LASTNAME@TVA.CA)

#### PRINTING

Printed at Transcontinental RBW Graphics, a division of Transcontinental Printing 2005 G.P., 2049 20th St. E., Owen Sound, ON N4K 5R2.  
All reproduction requests must be made to COPIBEC (paper reproductions at 800-717-2022) ISSN: 1915-8998

#### DISTRIBUTION

Distributed by Comag

#### SUBSCRIPTIONS: 1-800-387-7244, STYLEATHOME.COM

**STYLE AT HOME**, Sub. Dept., P.O. Box 814, Markham Station, Markham, ON L3P 7Z6. Send address changes to the post office box address above, including the mailing label from your latest issue. Allow eight weeks for changes.

#### SUBSCRIPTION PRICES

Canadian subscriptions: **1 year = \$34.95** (plus taxes)  
U.S. subscriptions: **1 year = \$90.00** (payable in advance)  
International subscriptions: **1 year = \$180.00** (payable in advance)  
Digital editions are available on Molto, Zinio, PressReader and Ebsco.  
We occasionally use our subscriber list for marketing purposes, or share it with carefully selected companies whose products may be of interest to you. If you do not want your name to appear on this list, please notify us in writing.  
Canadian Postmaster: Return undeliverable Canadian addresses to Style at Home, 123 Front Street West #909, Toronto, ON, M5J 2M2. Publications Mail Agreement 41557548, PAP Registration 08282. Postage paid at Gateway in Mississauga, ON.

#### OUR PRIVACY POLICY

The reproduction of written material, illustrations or photographs from this magazine is prohibited. Although all possible precautions have been taken to ensure that the information contained in *Style at Home* is accurate, it is understood that the magazine cannot be held responsible for errors or omissions that may occur in relation to the use or presentation of this information. The articles in this magazine are the exclusive responsibility of their authors.

*Style at Home* is published 9 times a year (except for occasional combined, expanded or premium issues) by TVA Publications Inc., 123 Front Street West #909, Toronto, ON M5J 2M2; 416-733-7600; [groupe TVA.ca](http://groupe TVA.ca).

#### OPERATION & PRODUCTION

**Director of Operation and Production, Magazines and Newspapers** Johanne Perron  
**Production Coordinator** Martine Lalonde

#### MARKETING, COMMUNICATIONS & EVENTS

**Senior Marketing and Circulation Director** Martine Aubin  
**Marketing Director** Audrey Corriveau  
**Assistant Marketing Director** Marie-Josée Smith  
**Project Manager** Olga Goncalves-Costa  
**Director, Newsstand Sales** Michel Nivischiuk  
**Director Circulation** Evelyne Labonté

#### ADVERTISING SALES, TORONTO

416-227-8248 ([patricia.mixemong@quebecormedia.com](mailto:patricia.mixemong@quebecormedia.com))  
**General Sales Manager** Patricia Heckmann  
**Senior Director, Media Solutions** Jérôme Leys  
**Sales Experts, Magazines** Cathy Ellis, Andrea McBride, Vanessa Watson

#### ADVERTISING SALES, MONTREAL

514-598-2880 ([ventespublicitaires@tva.ca](mailto:ventespublicitaires@tva.ca))  
**Principal Vice-President, Sales** Patrick Jutras  
**General Manager, Media Solutions** Marie-Josée Fournier  
**Senior Director, Magazines & Newspapers** Kimberley Rouse  
**Senior Directors** Karl Berthomé, Geneviève Brodeur  
**Sale Expert, Magazines** Vickie Bouthillier  
**Coordinator** Rosina De Rose

#### QUEBEC CITY AND REST OF QUEBEC

418-688-9330 ext. 7500  
**General Sales Manager** Nathalie Langevin

#### ADVERTISING SALES, USA

Francis Gauthier 416-227-8301

#### CONTENT MARKETING & CREATIVE MEDIA SOLUTIONS

**Media and Content Strategist** Jeremie Marcoux  
**Project Management and Production** Inga Tangreda

#### SENIOR MANAGEMENT, TVA GROUP INC.

**President and CEO of TVA Group Inc.** France Lauzière  
**Senior Vice-President and Chief Operating Officer** Martin Picard  
**President of Human Resources** Jean-François Reid  
**Vice-President of Communications** Véronique Mercier  
**Vice-President of Finances** Anick Dubois



Funded by the Government of Canada



For any comments, please email [letters@styleathome.com](mailto:letters@styleathome.com)  
©2021 TVA Publications Inc. All rights reserved.





# style news

## PAINT PALETTE *of the month*

Behr **BARELY BROWN** N180-1,  
Home Depot, [homedepot.ca](http://homedepot.ca).

Beauti-Tone **BE NOTICED**  
B27-2-0983-3, Home Hardware,  
[homehardware.ca](http://homehardware.ca).

Behr **OCTOBER LEAVES** S210-7,  
Home Depot, [homedepot.ca](http://homedepot.ca).

Beauti-Tone **LITTLE BLACK  
NUMBER** DR60-3, Home Hardware,  
[homehardware.ca](http://homehardware.ca).

## WE'RE INSPIRED BY...

the warm, enveloping quality of a palette based on caramel and deep copper. Accent them with burnished gold or brass, but don't forget to add black for tension and contrast. These might be autumnal hues, but indoors, they'll be welcoming all year long.



# caramel

**1 TABLE LAMP**, \$50, HomeSense. **2 Échasse glass VASE**, from \$180, Kelli Shop. **3 WALL PRINT**, \$130, Bouclair. **4 VASE**, \$195, Obakki. **5 Cédric Ragot's Dolphin ARMCHAIR**, \$6,385, Roche Bobois. **6 Loretta SOFA**, \$599, Structube. **7 DINING CHAIR**, \$160, Bouclair. **8 Gurli CUSHION COVER**, \$5, IKEA. **9 Bishop THROW**, \$69, Urban Barn. **10 Wilson COFFEE TABLE**, \$298, Zone.





## '70s Statement

CANADIAN STAR DESIGNER ALY VELJI LENDS HIS UNERRING EYE TO A NEW WALLPAPER COLLECTION FOR ROLLOUT THAT TAKES ITS INSPIRATION FROM THE CLASSIC 1970s ARCHITECTURE STYLE KNOWN AS BRUTALISM. THE EDGY, ARTISTIC DESIGNS IN THREE STYLES, EACH OF WHICH CAN BE CUSTOM-ORDERED TO FIT YOUR WALL, CONTRAST EARTHY COLOURS FOUND IN NATURE WITH THE SHARP, ANGULAR LINES AND SHAPES THAT CHARACTERIZE BRUTALIST STYLE. From \$15 per square foot, rollout.ca.



## SO WRIGHT!

Brizo's breathtaking new Frank Lloyd Wright collection of bath and shower fixtures takes its inspiration from the work of the renowned architect, with uniquely designed pieces featuring wood accents, squared silhouettes and unconventional operations, such as sideways flow. Much like Wright's designs, the pieces are beautiful, while also a breakaway from conventional thinking.

Faucet, \$1,078, handles, \$250, shower head, \$3,658, brizo.com.



## A HEALTHIER HOME

"The quality of your indoor air can be a huge indicator of how healthy your home is," says Sarah Walker, a well-being-at-home specialist. "While you can sometimes smell poor indoor air quality - that musty or stale smell - more often, you'll experience symptoms like fatigue, brain fog, upper respiratory difficulties, headaches and nausea." Air purifiers, she says, are a great way to ensure the air you're breathing is clean and healthy. "A good one, like the Dyson Purifier Hot + Cool Formaldehyde Air Purifier, will monitor your indoor air, show pollution levels in real time, and automatically and thoroughly remove pollutants." Sarah says a healthy home should also have a whole-home water filtration system for drinking, cooking and bathing. And, she advises, if you're considering renovating, take the opportunity to look for healthier alternatives like formaldehyde-free hardwood flooring and natural-fibre rugs.

Dyson Hot + Cool Formaldehyde Air Purifier, Fan & Heater, \$900, dysoncanada.ca.



# GOLD STANDARD BATHROOMS



## PRETTY MODERN

American Standard's new Studio S Collection gives you a complete coordinated look for the bath, including faucet and shower components, furniture and china pieces – all featuring contemporary geometric and subtle details. The fully modular collection lets you customize it to your bathroom's dimensions, and is available in a variety of elegant finishes and colours.

Studio S Collection, from \$63 to \$3,126, [americanstandard.ca](http://americanstandard.ca).

## TOUCH-ME-NOT TOILET

Enjoy an extra level of germ-free reassurance with the new touchless version of American Standard's iconic Cadet toilet. Activated by a swipe of the hand (or, if you prefer, a push button), the Cadet Touchless Toilet has all the features that have made this model a bestseller for years – including a comfortable design, water savings and flush power – for a cleaner, more hygienic go.

Cadet Touchless Toilet, \$716, [americanstandard.ca](http://americanstandard.ca).



Sharyn Saab wanted mid-priced, quality bed and bath linens that were eco-friendly – so she founded her company, Envello, and started producing them.



## Sleep Easy

Eco-friendly Canadian brand Envello offers premium quality bedding and bath accessories that feel amazing, are priced great, and you can feel good about buying. Founder Sharyn Saab, who comes from a family of textile makers, was inspired to launch Envello after first shopping for sheets at a high-end Toronto store (where the prices were prohibitive), and then a box store (where the fluorescent lighting and plastic everywhere were a complete turnoff). She knew there was room for a mid-priced, quality alternative that would be good for the environment, and for the workers who made the products, too. We particularly love the bath collection – ranging from cushy washcloths, towels and mats (\$15 to \$108) to a classic cotton bathrobe for \$128.

From \$15, [envello.ca](http://envello.ca).



**1 LAMPSHADE**, \$25. **2 Purple VASES**, \$20 for 2. **3 SCREEN**, \$89. **4 THROW**, \$60. **5 Blue VASE**, \$27.



**3**

## FEELIN' GROOVY

Fabulous fashion and textile designer Zandra Rhodes got her start on Carnaby Street in London back in the Swinging '60s, and the colourful, charismatic spirit of those days still infuses her work today. Her latest adventure is IKEA's brilliant new accessories collection, called Zandra Rhodes Karismatik. "The name Karismatik is absolutely perfect for this collection, which I think is about character and dynamism," says Zandra, who has dressed everyone from Princess Di to Paris Hilton, and even Freddie Mercury. The collection includes cushions, rugs, vases and more, all featuring the designer's trademark bold patterns, vivid colours and striking shapes. They're designed to let you express your own personality in how you use them – display one for a striking statement, mix and match a few any way you like, or go all in and fill your home with them. As Zandra says, "It's all about being yourself, and letting others follow you."

Karismatisk collection, from \$2, [ikea.ca](http://ikea.ca).



Designer Zandra Rhodes.



**4**

**5**



## Fill It Up, Please!

IF YOU WANT JUST THE RIGHT AMOUNT OF WATER FOR YOUR PASTA POT OR REFILLABLE DRINKING BOTTLE, JUST SAY SO! DELTA'S VOICEIQ TECHNOLOGY, FOUND IN THE NEW DELTA TOUCH20 FAUCET (SEE DELTA'S WEBSITE FOR COMPATIBLE MODELS), PAIRS WITH GOOGLE ASSISTANT OR AMAZON ALEXA TO TURN THE FAUCET ON OR OFF, OR FILL A CUSTOM CONTAINER. IT'S A GREAT OPTION THAT LETS YOU AVOID TOUCHING THE FAUCET WHEN WORKING WITH FOODS LIKE MEAT OR FISH. AND YOU CAN USE IT TO MONITOR YOUR WATER USAGE, TOO.

From \$575, [deltafaucet.ca/voiceiq](http://deltafaucet.ca/voiceiq).

# high OR low?



Two posh, plush living rooms: one keeps you flush with cash, the other has a price tag that'll make you blush. Which is which?

**PRODUCER** PETER PAQUETTE | **PHOTOGRAPHY** MARK BURSTYN



HIGH \$19,516



\$120  
1 Sequence Jersey **PILLOW COVER** in Navy and **INSERT**, CB2, cb2.com.

\$8,930  
2 Parcours large **SOFA**, Roche Bobois, roche-bobois.com.

\$109  
3 Raj Silk green **CUSHION COVER** and **INSERT**, CB2, cb2.com.

\$400  
4 Spy XL **FLOOR MIRROR**, EQ3, eq3.com.

\$299  
5 Brass **FLOOR LAMP** and **SHADE**, Home Soci ete, homesociete.ca.

\$120  
6 Sequence Jersey **PILLOW** in Dark Grey and **INSERT**, CB2, cb2.com.

\$130  
7 Soren knit **THROW** in Storm Grey, EQ3, eq3.com.

\$3,845  
8 Dot Swivel **ARMCHAIR**, Roche Bobois, roche-bobois.com.

\$1,203  
9 Turkish colour transition **RUG**, 6'2" x 8'11", ECARPETGALLERY, ecarpetgallery.com.

\$4,360  
10 Metallica **COCKTAIL TABLE**, Roche Bobois, roche-bobois.com.

**ACCENT CHAIR**, GlucksteinHome Serena, Hudson's Bay. Bailey 24" x 24" **PILLOW** in Navy, Urban Barn. **FLOORING**, Duraclac Luxury Vinyl Plank in Black Walnut, Lowes. **WALLPAPER**, OCELOT BP 3703, **PAINT**, Pigeon No. 25, Farrow & Ball. Coffee table **BOOKS**, Indigo. **FERN AND POT**, Quince Flowers.

LOW \$5,073



\$13  
1 Varelid **CUSHION COVER** in blue/black and **INSERT**, IKEA, ikea.ca.

\$2,975  
2 Elliot Velvet **SOFA**, Maison Corbeil, maisoncorbeil.com.

\$39  
3 Clooney **PILLOW** in Fern, Urban Barn, urbanbarn.ca.

\$60  
4 Nissedal **FLOOR MIRROR**, IKEA, ikea.ca.

\$80  
5 SKAFTET **FLOOR LAMP**, \$60, Ringsta 42 cm **SHADE**, \$20, IKEA, ikea.ca.

\$49  
6 Oui Corduroy **PILLOW COVER** in Storm Grey and **INSERT**, Indigo, indigo.ca.

\$60  
7 Oui recycled knit **THROW** in Storm Grey, Indigo, indigo.ca.

\$499  
8 Revo **SWIVEL CHAIR** in Cream, Structube, structube.com.

\$399  
9 Wien **AREA RUG**, 5' x 8', Mobilia, mobilia.ca.

\$899  
10 Woro glass **COFFEE TABLE**, Mobilia, mobilia.ca.



# Refined Reflections

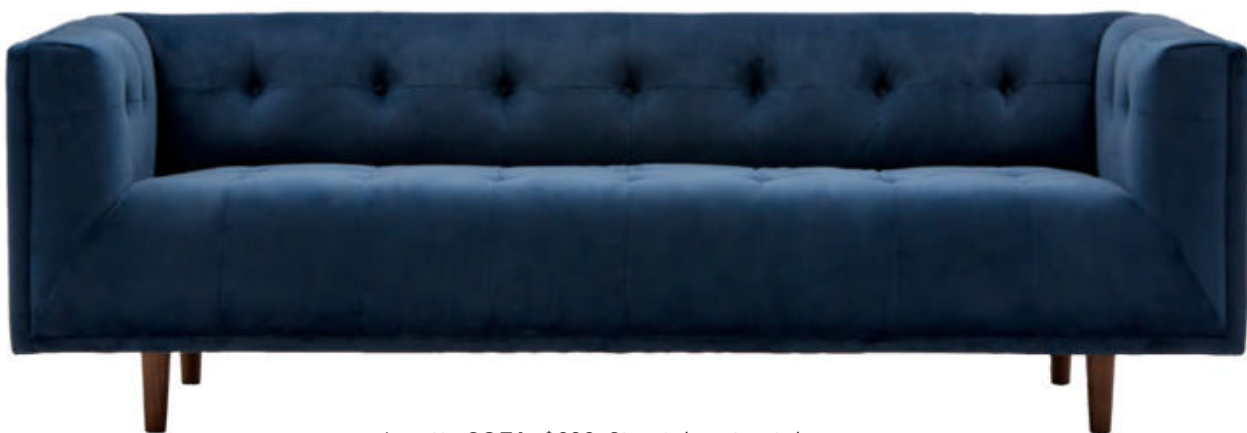
A floor mirror isn't just for the bedroom, dressing room or entry. Leaning against a wall in a dark corner or positioned to reflect light from a window, a full-length standing floor or wall-mounted mirror is magical for enlarging and brightening a space. Currently in vogue: matte black or gold-finished frames – oh, so chic.



**1** Rolf metal and glass **MIRROR**, \$699, cb2.ca. **2** Composite wood and glass **MIRROR**, \$349, Urban Barn, urbanbarn.com. **3** GlucksteinHome metal, marble and glass free-standing **MIRROR**, \$739, Hudson's Bay, thebay.com.

# In Living Colour

Time to exit your comfort zone! If you've always opted for a neutral living room sofa, now's the time to be brave and go for bold, beautiful colour. We opted for a Capri blue sofa as the basis for two palettes. In the first, tone-on-tone blues give a restful feeling. Then for a different mood, we used cream as a secondary colour for a subtle take on classic blue and white. In both, a green accent cushion and fern keep things lively. Feeling more daring? Bring in orange (blue's complementary colour) for a vibrant touch.



Loretta **SOFA**, \$699, Structube, structube.com.

# Cozy Up

Indulge in a new throw – you know you want to! – just in time for your fall online streaming pleasure. Now, where's the remote?

∨ **HIGH**

**\$525**

Nomade throw, Amara, amara.com.



**\$92**

Ombre acrylic throw, Nest & Nook, nestandnookhousewares.com.



**\$70**

Blue Jay polyester throw, Indigo, indigo.ca.



**\$15**

Silvan cotton throw, Structube, structube.com.



∧ **LOW**

# Celebrate

## IN COLOUR

TEXT MARTHA UNIACKE BREEN

PHOTOGRAPHY ALEX LUKEY

STYLING CHRISTINE HANLON

Designer Michelle Hurley's relaxed take on Thanksgiving decor uses a lively mix of old and new, high and low, and playful colour for a holiday scene overflowing with warmth and welcome.

### *Entrez Hues!*

Creating an eye-catching and inviting scene starts at the front door, where touches of purple, brown and lavender in the eucalyptus-and-wheat wreath strike a contemporary note among bright chrysanthemums, ornamental cabbage and old-fashioned heirloom pumpkins with their unusual shades and nubby shapes.

**DESIGN**, Michelle Hurley, Michelle Hurley Design. **LANDSCAPE DESIGN**, Lindsay McFadden, Heart's Content Gardens. **WREATH**, Oleander Floral Design. **CHRYSANTHEMUMS, PUMPKINS, CABBAGES**, Sobey's. **WELCOME MAT**, Elite Mkt. **DOOR PAINT**, Onyx 2133-10, Benjamin Moore.



## Cheers to Colour

Michelle has been collecting many of the pieces for her holiday table for years, and loves the idea of combining fancy Waterford cranberry goblets with humbler (but lovely) turquoise glasses from Urban Barn. Some items, like Blue Willow transferware, gleefully mismatched champagne flutes, and the table runner (given to her by family who travelled to Guatemala) are true treasures.

**GOBLETS** (cranberry), Waterford; (turquoise), Urban Barn. Vintage Blue Willow **TRANSFERWARE**, Johnson Bros. Vera Wang gold-rimmed **PLATES**, Wedgwood. Magenta and white striped **NAPKINS**, turquoise **NAPKINS**, brass-footed **CENTREPIECE BOWL**, Target. **PLACE-MATS**, Bowring. **CANDLES**, Yummi Candles. **CANDLESTICKS**, Green Gables. **CHAIRS**, **MARBLE BOWL** (with pomegranate seeds), CB2. **TABLE**, Artemano. **CHINA CABINET**, Cornerstone. **CHANDELIER**, Jonathan Adler. **ARTWORK** (to right of china cabinet), Bouclair. **SOFA**, Article. **TRAY**, At Home.



FOR SOURCES, SEE OUR WORKBOOK

# *Pudding, Please!*

A little pot of delicious is all you need to round out a cozy fall meal *en famille*.

**RECIPES** MICHELLE DIAMOND

**PHOTOGRAPHY** TANGO

**FOOD STYLING** NATALY SIMARD

**PROP STYLING** CAROLINE SIMON



## **tip**

Put those pretty glass jars you've been saving to good use. If you've kept the lids, these little puddings will transport easily to potluck dinners.

# Blueberry Chia Pudding

## INGREDIENTS

MAKES 4 SERVINGS

- 1 cup 2% milk
- ¼ cup chia seeds
- 2 tbsp maple syrup (approx.)
- 1½ tsp vanilla
- 1½ cups fresh blueberries (approx.)
- 1 tsp grated orange zest
- ¼ cup Greek yogurt
- Grated chocolate
- Chopped nuts (optional)

## DIRECTIONS

In bowl, combine milk and chia seeds; let stand for 5 minutes. Mix in maple syrup and vanilla. Cover and refrigerate for at least 4 hours or overnight.

In food processor or blender, purée half of the chia pudding, blueberries and orange zest; divide among four 1-cup jars or glasses; top with remaining chia pudding. Can be made ahead, covered and refrigerated for up to 4 days.

Dollop spoonful of yogurt over puddings; garnish with blueberries and chocolate, and nuts (if using). Drizzle with maple syrup, if desired.

## Change It Up

### Coconut Mango Pudding

Replace milk with coconut milk; replace blueberries with cubed mango; replace orange zest with lime zest. Garnish with chopped mango and flaked coconut.

### Cashew Kiwi Pudding

Replace milk with cashew beverage; replace blueberries with pieces of kiwi. Omit orange zest. Garnish with chopped unsalted pistachios.

# ◀ Creamy Coffee Pots de Crème

## INGREDIENTS

MAKES 4 SERVINGS

- 1 cup 35% whipping cream
- 3 tbsp icing sugar
- ¼ tsp vanilla

### Coffee Pudding

- 1 cup mascarpone cheese, at room temperature
- ¼ cup icing sugar
- ¼ cup espresso or strong coffee, cooled
- 1 tbsp Irish cream or coffee liqueur (optional)
- Grated chocolate
- Chocolate-coated coffee beans (optional)

## DIRECTIONS

Using electric mixer, beat cream, icing sugar and vanilla until stiff peaks form. Cover and refrigerate until ready to use.

**Coffee Pudding** In separate bowl, beat mascarpone, icing sugar, espresso and liqueur until smooth. Stir in ½ cup of the reserved whipped cream. Divide pudding among four 1-cup jars or glasses; refrigerate for 1 hour.

To serve, top with remaining whipped cream and chocolate, and coffee beans (if using).



▶ Alesund **CANISTERS**, \$22 (small), \$29 (medium), \$39 (large), Urban Barn, urbanbarn.com.



▶ Tulip ice cream **DISH**, \$3, Crate and Barrel, crateandbarrel.ca.



◀ Hand-marbled fringe **NAPKINS**, set of 4, \$124, Misette, misettetable.com.



▶ Laucadia mango **BOARD**, \$38, VdeV Maison, vdvmaison.com.

[ shopping ]



▶ Confetti **GLASS**, \$83, Misette, misettetable.com.



▶ Pin brushed-bronze **FLATWARE**, 20-piece set, \$119, CB2, cb2.ca.



▶ Axel **DINNER PLATE**, \$9, CB2, cb2.ca.



◀ Berry Box **COLANDER**, \$8, Crate and Barrel, crateandbarrel.ca.

# SPECIAL OFFER



save up to

**62%**

off the newsstand cover price.

1 year for only

**\$23<sup>95</sup>**  
+ taxes

*Style at Home* is Canada's top resource to inspire **FABULOUS DECORATING, LATEST DESIGN** and **ENTERTAINING IDEAS.**

[styleathome.com/subscribe](https://styleathome.com/subscribe)

Please allow 4-8 weeks for delivery of the first issue. Offer valid in Canada only until December 31, 2021.

Expert advice for designing the ensuite of your dreams.

TEXT KARL LOHNES

*For almost 20 years, designer Benjamin John Ouellette (who's based in Waterloo, Ont.) has incorporated the latest kitchen and bathroom trends and innovations into his design projects. Benjamin's approach is to uncover each client's unique personality and lifestyle, which results in award-winning, personal spaces that enhance his clients' lives. We turned to Benjamin for insight into what design trends he sees for ensuite bathrooms.*

**KL:** Should ensuite bathrooms and dressing rooms be decorated the same as the primary bedroom, or should they be considered separate spaces?

**BO:** To decorate these rooms as a single entity would be a missed opportunity, but we need to understand these rooms a little better. Dressing rooms should invigorate and give confidence because this is where we transform into the human that takes on the world. This may mean painting the ceiling a bold, energizing colour, or using textured cabinetry and handles that emit a feeling of warmth and stimulating tactility. The bedroom should be relaxing, surrounded by cool colours, large plants that improve air quality, and flexible lighting options that offer warm lighting before bedtime and cool energizing lighting in the

# Benjamin Ouellette



morning. We need the ensuite bath to successfully start the day but also to help wind down, and this means blending elements from both the bedroom and the dressing area. Installing a lively large-scale wallpaper, incorporating a boldly painted vanity, or using leathered and suede textures in tiles and counters are great ways to create a space that is stylish, refreshing and relaxing.

**KL:** What are three products or design elements that can be incorporated into an ensuite bathroom that will help homeowners luxuriate?

**BO:** The first feature that is hands down the most luxurious and necessary element for your upcoming ensuite project is a radiant floor heating system. Many radiant floor heating systems are Wi-Fi enabled and you can program the app to activate around your schedule to save on energy bills. Next, if you want to





experience a gentle summer rainstorm in your shower, the Real Rain system by Kohler is the most luxurious shower system. The 19-inch-square panel is installed on the ceiling and offers escalating pressure that mimics real rain – a true luxury experience. Lastly, nothing is more luxurious than a pampering bathtub that cleanses, exfoliates and moisturizes the skin through oxygen-rich microbubbles. Hydrotherapy tubs have been used in wellness spas across North America, and we are now able to benefit from the luxurious science behind these tubs and create a spa-like experience at home.

**KL: What are your go-to paint colours for the primary bedroom and ensuite?**

**BO:** A tried, tested and true colour that seems to be my go-to neutral is Benjamin Moore's Silver Satin OC-26. This colour is the perfect balance of warm and cool tones and works with much of today's popular bath decor. If you're more adventurous, think outside the box and paint the ceiling a fun and exciting colour. We often forget the ceiling and it is a vital part of our interior design. One colour I have had a lot of success with is from Benjamin Moore's Affinity collection. Mysterious AF-565 is a rich blue that isn't too dark or too juvenile; it's classy, sexy, and invigorates and relaxes.

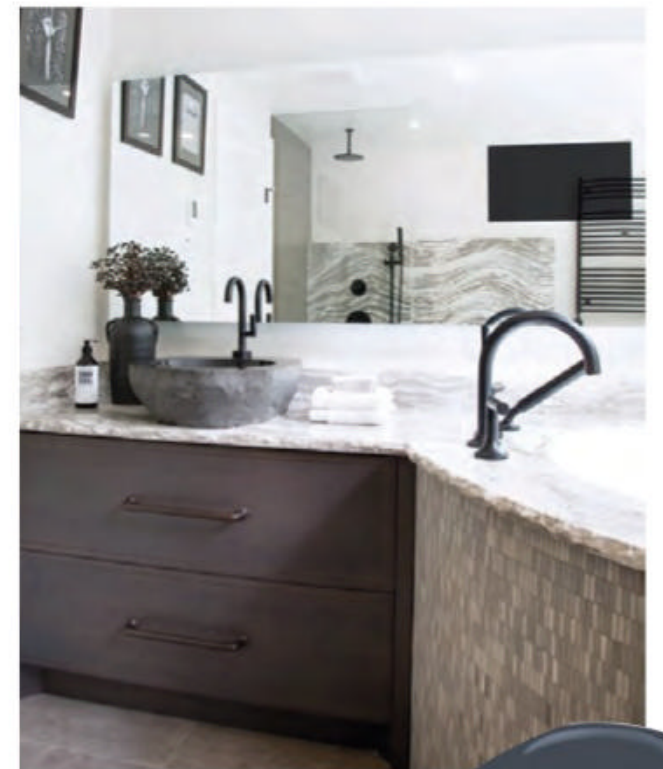
**KL: Undermount or vessel sinks? Natural stone or quartz counters?**

**BO:** Undermount sinks are easier to keep clean, however, a vessel or semi-vessel sink can stand out in the best way if it's implemented well into a bathroom design. At one of the last trade shows I attended, I saw new vessel sink styles using materials like black [Nero] Marquina marble and chiselled rock. They would truly stand out as art if used in a modern bathroom design.

In countertops, options have exploded in the last few years, especially with quartz textures. I am loving the honed, leathered and suede finishes instead of a standard polish. My current favourite is Silestone's Nolita, which has a concrete-like texture.

**KL: What's the biggest bathroom design trend you hope to incorporate in your future designs?**

**BO:** One trend that I am excited to implement into my work is the use of curved elements. With biophilia [the desire to connect with nature] as a design trend that's becoming more common, the use of organic lines and forms in our spaces will become the new normal. I would be excited to implement curved shower walls, arched entries, curved cabinet fronts, and tiles that have natural edges and a concave/convex dimension.



**PAINT,**  
Silver Satin OC-26,  
Benjamin Moore.

**PAINT,**  
Mysterious AF-565,  
Benjamin Moore.

# Escape ROOMS

Like the kitchen, the bathroom is a tricky one to design. In both rooms form and function must align, as mistakes are costly to amend. But that's where the similarity ends. While the kitchen brings people together, the bathroom is a private refuge, and that makes its design much more personal. It is the ultimate sybaritic space that nurtures our body, mind and spirit. No wonder the best bathrooms are so highly individualistic. These five luxurious spaces are translations of each owner's unique vision of a personal sanctuary. Which one will inspire your next great escape?

# LUXE & LUMINOUS

Designer Cindy Brownstein unites the charm of the past, clean lines of the present, and the timeless elegance and luminosity of white in this soothing space. An exquisite ornate gilt mirror leans casually against the wall, balancing the mood between elegant and informal, while also enlarging and brightening the room. The old-world feel of the mirror, armoire and style of tub contrast effectively with the clean, contemporary lines of the wall-mounted vanity. To soften the mood, a wall of white sheer curtains preserves privacy and filters daylight. Gold is repeated throughout for a luxe touch. The end result is calm, understated luxury.

**DESIGN, VANITY DESIGN, CURTAINS, SCONCES,** Cindy Brownstein, Cindy B Décor. **VANITY CONSTRUCTION,** Jazzy Design. **TILES,** Ceragres. **TUB, FAUCET,** Batimat. **ARMOIRE, PENDANT, MIRROR,** Ambienti Design. **SIDE TABLE,** Zone Maison.



# BOLD BEAUTY

Sleek design in basic black and white takes a backseat to the work-of-art mosaic that blooms from behind the bathtub in this modern space. The installation of the mosaic took three tries before the flower was deemed petal-perfect. Light bounces thanks to mirrors, glossy surfaces, and the reflective quality of the mosaic tiles, which all act to amp up the impact of the graphic flower.

**DESIGN**, Patty Xenos. **MOSAIC**, Sicis. **BATHTUB**, **SINK**, Wetstyle.





Petal power creates a focal point with graphic impact.

# BREATHING ROOM

TEXT MARTHA UNIACKE BREEN

Since the principal bedroom in designer Odette De Lucia's Oakville, Ont., home looks directly into the bathroom, she wanted it to provide a serene and soothing view. Taking her cue from a Parisian boutique hotel, De Lucia created a supremely functional space that's as calming to look at as it is to spend time in.

**DESIGN**, Interiors by Odette. Grasscloth **WALLPAPER**, Phillip Jeffries. **PAINT**, White Dove OC-17 (trim), White Dove OC-17 at 50% strength (ceiling), Benjamin Moore. **SCONCES**, Universal Lighting. **MIRRORS**, Wayfair. **COUNTERTOP**, Hanstone. Custom vanity **MILLWORK**, G. Custom Inc. Duck foot **SOAP DISH**, CB2.



The main vanity wall has to perform a variety of functions, all while keeping things calm and collected. Against a backdrop of nubby blue grasscloth wallpaper (actually, commercial-style vinyl, impervious to moisture), the open counter is organized into double sinks and a stepped-down vanity table - the perfect height for relaxed primping and pampering.





## BATHROOMS

Keeping the lines of the room ultra-simple allows the beauty of materials to shine, like the shower's Turkish dolomite bath tiles and mosaic marble floor (walking on its heated surface is like a hot-stone massage for the feet, says Odette). She found this blue-haired lady (below) on Etsy, a wonderful resource for original artwork.

**BRASS FAUCETS, SINKS,** Kohler. **FLOORING,** MSI Surfaces.



“I always think about how I feel in a space – that, to me, is as important as functionality.”

– Odette De Lucia





Another secret to the room's serenity is the repetition of round shapes that serve as a soft counterpoint to its clean, straight lines. The rounded profile of the vanity chair rhymes with the radius corners of the wall mirrors and tube-shaped lighting. Even the sinks' contemporary-style faucets have rounded corners.

**MAKEUP MIRROR**, West Elm. **VANITY CHAIR**, through Interiors by Odette. **TOWELS, LINENS**, Muskoka Living. **ORCHID, FLORAL ARRANGEMENTS**, Fiori Oakville.

# SPA CHIC





Oversize polished marble floor tiles establish a clean and uncluttered aesthetic in this elegant spa-like ensuite.

This ensuite off a primary bedroom is a true refuge for pampering with all the accoutrements of the best spa resorts. The freestanding tub takes centre stage, with a tray-topped stool standing at the ready for luxe toiletries. Behind the tub, on the left, the toilet is cleverly hidden behind a marble partition trimmed in a strip of iridescent mosaic tiles. On the right is a generously proportioned spa-like walk-in shower. Facing twin varieties in walnut (to match the adjacent dressing room) reinforce the horizontal lines of the clerestory windows and are wall-mounted to keep the mood light and airy. Gold hardware, mirrors and look-at-me chandelier layer in luxury.

**DESIGN**, Symbiose Design. **STORAGE, COUNTER**, Armoires Cordeau. **TUB, FAUCET, SHOWER**, Plomberie Instal Précision. **PENDANT**, Luminaires Paul Grégoire.



# GOLD MEDAL

Get your sunglasses on! Glamorous 3D diamond-tipped gold tiles wow in this dazzling guest bathroom. The other metal used is chrome, which allows the feature wall to take the prize as first-place finish – nothing should detract from its impact.

**DESIGN**, Mario Januario Design. **TILES, COUNTER, FAUCET**, Ciot.

FOR SOURCES, SEE OUR WORKBOOK

A guest bathroom is the ideal place for an unconventional finish that will make a lasting impression.



# LAUNDRY ROOMS THAT WORK

Unfinished wood gives a minimalist feel to this laundry room that boasts a bevy of closed and open storage, and enjoys enviable natural light.

If

you've got a laundry list of complaints about the room where this basic household chore happens, you're not alone. In many older homes, the washer and dryer were relegated to dark unfinished basements. Well, that was then. Today, we want bright, cheery spaces that are easy to maintain and have plenty of storage and sophisticated accessories for the task at hand. Read on to start planning the laundry room of your dreams.

## Location, Location

To limit carting clothes back and forth, the ideal location for the laundry room is near the bedrooms, where clothes are stored. But not all houses can accommodate a laundry room there, especially in homes where bedrooms are on a second floor. The next best location is near the home's main activity area, a.k.a. the kitchen or bathroom. "It depends on what the home's layout allows," says Stéphanie Lévesque, cabinetmaker for Rona. "Accessibility is the key." If the vibration of the machines interferes with family life, Stéphanie suggests adding insulating strips or soundproofing panels to the laundry room, which, she says, costs less than one thinks.

## Planning for Perfection

Before tearing down walls to accommodate your new laundry room, make a detailed list of your family's needs and how this task currently fits into your lifestyle, says professional organizer Mylène Houle Morency. "If we tend to fold clothes in front of the TV, there is no point in providing a nice folding counter. It won't be used," she says. Be realistic, she advises, then define zones based on function: laundry sink for handwashing; baskets for sorting; appliances; folding and drying area. Get detailed – do you tend to have a lot of clothing that needs to dry flat or be hung to dry? Work those features into your plan. Don't forget to include storage for soaps and other cleaning products, a broom closet, and perhaps a special closet that's ventilated for sports equipment.



# SUNNY YELLOW

Even for those who don't love laundry day, this happy-hued room would bring cheer to the task. "We wanted to offset the bright yellow with a more neutral graphic palette of black and white, which works with the rest of the house," says designer Jodie Rosen, who thought of everything her clients would need. There are two washing machines and two dryers. The built-ins include a pullout hamper system, iron and ironing board storage and a broom closet. A combo fridge-freezer is handy for overflow of food and drinks. And there are all the basics, too: a deep laundry tub, plenty of additional storage and a ton of counterspace for folding.

**DESIGN**, Jodie Rosen Design. **PAINT**, Sundance 2022-50, Benjamin Moore. **FLOOR TILE**, Stone Tile. **BACKSPLASH TILE**, Scale Benzene in glossy white, Centura. **COUNTERTOP**, Pure White, Caesarstone.



## CLASSIC GREY

Designers Trevor Ciona and Curtis Elmy painted the cabinets in this laundry room grey, adding instant elegance. “It’s a room we walk through a lot,” says Curtis, “so we wanted it to be sophisticated and bright.” Storage is abundant, with double-height cabinets reaching up to the ceiling. Nothing says clean like white countertops and backsplash, while gold hardware adds warmth.

**CABINETRY**, Atmosphere Interior Design (design), Majestic Cabinets (construction). **LIGHTS**, Richardson Lighting.

## Ergonomics & Efficiency

To make things easy on yourself, use simple ergonomic principles when planning the main built-in elements. Consider hiring a professional kitchen or bath cabinetry expert to plan the layout. If completing this stage yourself, make sure that every closet, cabinetry and machinery door can open without interference with the others, says Stéphanie. Imagine moving through the space with bulky items like laundry baskets, and include enough floor space for the ironing board. Plan out the folding surface carefully. “A comfortable height for a folding table allows you to rest your hands without having to bend your arms or your back,” says designer Audrey Kent-Bélanger. “It can be a permanent surface above the washer and dryer, and made of an easy-to-clean material like stainless steel or laminate.” It could even double as a gift-wrapping centre or potting table for indoor plants. In tight spaces, install a pullout surface for additional countertop space. “We like to put the counter in front of the window,” says Stéphanie. With or without a window, include bright lighting so it’s easy to spot stains on items before washing. Store heavy tubs of detergent at an easily accessible height to reduce lifting, and ensure the room has professionally installed electric and ventilation systems. Finally, to keep it spic and span, Stéphanie recommends flat-front cabinets and easy-to-clean flooring, such as laminate, ceramic or vinyl.

## Storage & Style

Ideally, to avoid constant bending (not to mention mess!), sorting clothes shouldn’t happen on the floor, says Audrey. Instead, consider using baskets on wheels, shelves with cubbies, or cabinets (she advises making cabinets deep enough to store blankets). For air-drying, install a pole, clothesline or hooks for hangers. Mylène suggests installing two retractable drying racks, which double the drying space. And banish those garish containers of soap behind closed cabinetry – better yet, pour detergent or pods into pretty glass jars and place on the countertop. Just be sure to keep detergents far out of the reach of children.

FOR SOURCES, SEE OUR WORKBOOK





# POWERFUL POWDER ROOMS

With a tight design concept and a bit of daring, you can make a big impression in the tiniest room in the house.

G

ood things come in small packages. That's the attitude to take when designing a powder room. Used mostly by guests, the little space is a perfect place to make a design statement. Wallpaper is a natural go-to, but a bold splash of solid colour is just as effective. While taking your design flight of fancy, don't forget the room's primary purposes. Good lighting and a mirror are necessities; then add elements that pamper, like luxury towels and soaps, and extra tissue and a basket of toiletries under the sink. For inspiration, here are four fab spaces that wow.

# SUBLIME SPA

Two sculptural onyx columns subtly highlighted by light strips create soothing symmetry in this spa-like sanctuary. The pale wood vanity and floor paired with soft creams and whites keeps the look minimalist, but also indulgent. The gleam of reflective surfaces adds just the right amount of sparkle.

**DESIGN**, Mario Januario Design. **CONSTRUCTION**, Macucina. **TILES, COUNTER, FAUCET**, Ciot.

# PURPLE REIGN

Guests are guaranteed to return to the dinner table with something to talk about after visiting this loo. An envelope of purple – the colour of royalty – is a bold gesture, matched by the show-stopping bucket-shape stainless-steel sink that’s integrated into a huge silver-leaf-finish baroque-style mirror. The effect is rich, luxurious and unforgettable.

**DESIGN**, Patty Xenos. **SINK WITH MIRROR**, Secjo de Giorgio Soressi, Altamarea.



POWDER ROOMS



# HAUTE HUES

Animal prints are always in fashion, but the green-and-black colourway of this stunning wallpaper achieves the mix of classic and *au courant* that fashion lovers crave. The chic mirror doubles its impact. Don't forget to accessorize: a gold-and-glass étagère styled with fresh blooms, reed diffusers and a candle brings a garden of "scentual" delights.

**DESIGN,** Sabrina Albanese.

**WALLPAPER,** Tortoise in Amazon, Celerie Kemble for Schumacher.

**MIRRORS,** Mirror Image Home.

**SCONCES,** Kelly Wearstler. **BATH ÉTAGÈRE,** RH.

# PATTERN PLAY

A sense of play matched by a sense of style turned this darling powder room into a tiny treasure. The blue chintz wallpaper was beautiful enough, but pairing it with a leopard print on the ceiling is a genius move. Artwork ties the two together. In decorating, a touch of the unpredictable is welcome, indeed!

**DESIGN,** Sabrina Albanese.

**WALLPAPER,** Pyne Hollyhock, Schumacher. **CEILING WALLPAPER,** Brunswick & Fils. **ART,** Erin Armstrong. **BATH STOOL,** RH. **TOWELS,** RL Ralph Lauren.



# SHOPPING

## Bathrooms

A luxe loo doesn't have to break the bank. From stylish vanities to finishing touches, these budget-friendly finds bring a bit of indulgence to your daily routine.



7



2



1



3



8



4



5



6



9

1 Cotton **TOWEL**, \$8, H&M Home. 2 Gibson engineered wood and metal **VANITY**, \$470, Canadian Tire. 3 Canarm Camilo glass-and-metal flush-mount **CEILING LIGHT**, \$55, Rona. 4 Bamboo **BATH BRIDGE**, \$65, Indigo. 5 Crater ceramic **SOAP DISPENSER**, \$22, Zone. 6 Glass and metal **STORAGE BOX**, \$20, Walmart. 7 Biscuit Collection 2" x 8" **TILES**, from \$15 per square foot, Ceragres. 8 Eurocube Collection ceramic **SINKS** and stainless-steel **FAUCETS**, from \$338 each, Grohe. 9 Roseaux **SHOWER CURTAIN**, \$40, Bouclair.

# OCTOBER 2021



## ON THE BRIGHT SIDE

Autumn brings a light show of jaw-dropping beauty: vibrant orange, shocking scarlet and brilliant gold. But if the season's shorter days already have you longing for more light, now is the time to look for ways to brighten your rooms for fall and winter. Bring in reflective surfaces like gleaming mirrors, clear glass and lustrous metallics. Hibernation never looked so chic.

# TIME *for* CHANGE

A handsome city home trades fussy traditional details for timeless transitional appeal.

**TEXT** ANNE EASTBOURNE | **PHOTOGRAPHY** ALEX LUKEY







#### OPPOSITE & THIS PAGE

To brighten this nook in the entryway, an ornate Venetian-style mirror and dark-wood cabinet were swapped out for a graphic open-based console and tall, tidy mirror. To further amp up light, designer Mona Lee painted out the tan-coloured walls and panelling with Benjamin Moore's Simply White. "After several paint trials, this was the white that provided brightness with a soft undertone against the dark hardwood floors," she says.

**DESIGN,** Mona Lee and Kelly Caplette, Manor Interior Design.

**MIRROR; TABLE; Arteriors' STOOL and PENDANT LIGHT;** Kelly Wearstler **LAMP;** Osborne & Little **STOOL FABRIC;** Manor Interior Design.

**DOOR PAINT,** Satin Black 2131-01, Benjamin Moore.

**It's** an empty nester's dream: the kids are grown and gone, and it's time to reimagine the house without any caveats. Save for, in this case, choosing dog-friendly finishes to accommodate a beloved dachshund. While it was built not quite 20 years ago, this four-bedroom house in Toronto's leafy Lawrence Park neighbourhood felt stuck in the past, its spaces defined by outdated paint colours and overwrought trim. Designers Mona Lee and Kelly Caplette were tasked with its overhaul. "The exterior has beautiful curb appeal, so our goal was to

update the interiors with a design that was classic, but with a contemporary edge," she says. "And, of course, be mindful of puppy accidents!"

Partially inspired by the clean lines and lighter wood tones in the couple's newly built South Carolina getaway, the graceful redesign focused first on toning down and simplifying architectural elements like wainscoting and mouldings, then injecting quiet luxury via subdued stretches of stone and wallpaper, and a simplified palette. Today, the enchanting home exudes a chic transitional style with staying power. For these empty nesters, the result is positively, well, dreamy.

*“We selected finishes and designs that have a classic appeal.”*





**LEFT & ABOVE** While the living room palette is cool, the room has an innate coziness, which Mona attributes, in part, to the tone-on-tone layers she introduced, especially the grasscloth wallpaper. “Layers of textures on walls really heighten a room’s look,” she says. The statement-making walnut panelling feels like the library in an old English country house – if it were redone by Arne Jacobsen. “Engaging the envelope through various wall treatments is hands-down one of the most effective ways to transform a space,” Mona says.

Mitchell Gold + Bob Williams **SIDE CHAIRS, RUG**, Elte. Philip Jeffries **WALLPAPER; SOFA**; Made Goods **SIDE TABLE**; Arteriors faceted wood **SIDE TABLE** and **FLOOR LAMP**; bolster and throw **CUSHIONS**; Manor Interior Design.



**BELOW** “We wanted this space to evoke the softness of nature, while still being refined,” Mona says, of the breakfast area. “We chose a solid wood table for practicality and plush dining chairs for comfort, then added some dynamic interest through the unique shape of the chandelier and the details on the custom sideboard.”

**TABLE,** Dinec. **CHAIRS, BOWL, CHANDE-  
LIER** by Visual Comfort, **RUG** by Dash & Albert, Manor Interior Design.

**RIGHT** Eye-catching texture and pattern – from the X detail on the sideboard to the sculptural elements atop it – spice up the understated palette. “When putting together a softer aesthetic, layers become important,” says Mona. “Layers of tones, patterns, shapes and textures – they breathe life into the space and give it personality, all while maintaining a minimal aesthetic.”

**CONSOLE DESIGN; DRAPERY; GLASS VASE;  
ART** by Beverly Fuller for Leftbank Art; Arteriors **TALL CERAMIC VASE, LAMP, SCULP-  
TURE;** Manor Interior Design.



**OPPOSITE** To take the kitchen from formal to transitional while optimizing the existing layout, Mona peeled back layers of fussy mouldings, then introduced clean-lined Shaker-style cabinets (the old ones were donated to Habitat for Humanity), a slightly larger island featuring a muted oak base, and a healthy dose of brass detailing to warm up all the white. “We ran the Spumoni marble backsplash up the wall behind the shelves, which gave it dimension and an extra touch of luxury,” Mona says. Durable Caesarstone quartz was used for the perimeter counters, where the lion’s share of the food prep happens.

**KITCHEN DESIGN,** Hudson Valley Lighting **PENDANT LIGHTS, STOOLS,** Manor Interior Design. **CABINETS,** Box Workshop. **ISLAND COUNTER,** Ciot. **PULLS,** Emtek. **FAUCETS,** House of Rohl.

**BELOW** While a roaring fire is always alluring, the family room also draws people in with its soothing palette and plush furnishings. “This is the oasis of the home – it’s all about comfort and functionality,” Mona says. Finishing the ample chimney breast in honed Escarpment limestone added loads of texture without straying far from the off-white scheme. The built-in, with shelves running up just one side, was designed to embrace the room’s asymmetrical layout. Two chairs in the bay window offer views of the back garden, but also swivel to face the sectional.

**FIREPLACE, STONE WALL,** Igne Ferro. **TV** (over fireplace), Samsung. Custom wool and silk **RUG**, Elte. **FLOOR LAMP,** Serge Mouille.

**RIGHT** Throughout the open-concept family and breakfast room space, the design incorporated quiet detailing, like the tone-on-tone graining of the coffee table’s wood veneer. “Mellow patterns add extra layers of interest without overwhelming the aesthetic,” Mona says. The table twists open 360 degrees when the owners need more surface area for display.

Pivot **TABLE** by Global Views, Manor Interior Design. **DISH,** Elte.



**OPPOSITE** Washing the family room’s dark khaki green walls in soft white instantly lifted the look. A few judiciously chosen contrasts – a toasty burnt orange inspired by the art, plus eternally stylish black – make the quiet hues sing. The owners found the paintings by Toronto artist Jenna Polla. “We pulled out colours from these and layered in additional colours to make the room feel more natural,” says Mona. “If you look at the natural world, at first glance, something seems like one solid colour, but when you look closer, it’s composed of many shades. Doing that in a space is an easy way to make it feel comfortable and visually pleasing.”

**SECTIONAL, THROW PILLOWS,** Manor Interior Design.





**THIS PAGE** The ensuite bathroom was transformed into a spa-like retreat despite its tight square footage. “Every inch mattered,” says Mona. The luxurious update brought in a free-standing soaker tub, dolomite marble tile flooring, and details like a Roman blind, crystal chandelier and grasscloth-look wallpaper. A striking veined porcelain tile in the shower brings an organic softness. Extras like a towel warmer and rain shower-head are sybaritic indulgences.

**TUB**, Victoria & Albert. **TUB FAUCET**, Kohler. **SIDE TABLE** by John-Richard; glass **PRIVACY SCREEN**; blind **FABRIC** by JF Fabrics; blind **TRIM** by Stroheim; shower **GLASS, WALL** and **FLOOR TILE**; Manor Interior Design. Rain and standard **SHOWER HEADS**, Brizio. **TOWEL HEATER**, Ico.

**BELOW** The dark wood of the ensuite bathroom’s double vanity leans toward traditional, but its design is sleek and modern. Likewise, the cool-toned faucets, pulls and towel bars are streamlined and angular, as is the hefty white Caesarstone countertop.

**VANITY, SCONCES** by Kelly Wearstler, Manor Interior Design. **TAPS, FAUCETS**, Brizio. **COUNTERTOP**, Caesarstone. **TOWEL HOOK**, LaLoo. **VANITY PULLS**, Emtek.







**ABOVE** The small but mighty mudroom at the side door features a console and cushioned bench, which both incorporate storage drawers, plus a row of hooks mounted on panelling. The charcoal panelling and the mid-tone wood pick up on finishes in the living room and kitchen, while the darling dachshund-themed planter and cushion celebrate the owners' favourite canine.

**CONSOLE, BENCH, CUSHION,** Maxwell vinyl **FABRIC** (on cushion), Stacy Garcia grey **WALLPAPER**, marble **FLOORING**, Richilieu **COAT HOOKS**, Manor Interior Design.

FOR SOURCES, SEE OUR WORKBOOK

# Theory of Evolution

A natural selection of textures and materials give lived-in comfort to a main floor waiting to be loved.

**TEXT** CHRISTY WRIGHT  
**PHOTOGRAPHY** LAUREN MILLER  
**STYLING** ME AND MO



**As** far as design assignments go, this one was pretty sweet. “It was a beautiful blank slate just waiting to be decorated,” says Toronto-based designer Sarah Birnie. The owners had just moved into the brownstone in the city’s Annex neighbourhood and hired Sarah to furnish and style the first floor. “They were coming from a smaller home so needed lots of new pieces,” she says. While the freedom of starting from scratch was exciting, the last thing Sarah wanted was for the space to look new. “My vision was to imbue it with the depth and warmth that only a mix of styles, textures and natural materials can bring.” Her dynamic contemporary-meets-cozy approach netted an interior that strikes the right balance between lovely and livable. Says Sarah, “This isn’t a ‘furniture museum,’ rather a really comfortable and stylish place to hang out.”

## GREY MATTER

The owners wanted to retain the entryway's grey accent wall, so designer Sarah Birnie (pictured left) ran with it. "To make the grey work with the main floor's neutral palette, I introduced other grey elements throughout the space for cohesion," she says. The console table was custom-made using reclaimed barn beams; its natural hues are picked up in the vintage chair and woven basket. Contemporary matte-black accessories fend off a rural look. "This home is downtown, so shouldn't feel like a cabin. The modern elements keep the space appropriate to its location."





“The contrast of hard with soft and old with new feels current.”

## BLACK ACCENTS

“My high school art teacher said every painting needs a hit of black. I take that advice into most spaces I design,” says Sarah. Here, she added sleek black chairs as an edgy foil to the wooden dining table and a dark cotton dhurrie rug, which breaks up all the wood tones and feels cozy. The owners’ reclaimed-wood framed mirror is centred behind the table, and its vertical placement is balanced by brass sconces, which add a layer of lighting to the modern chandelier. Drapes hung just beneath the moulding accentuate the 10-foot-high ceilings.

**DESIGNER**, custom **CONSOLE TABLE**, Sarah Birnie, Sarah Birnie Interiors. **DESIGN ASSISTANT**, Erica Greco, The Neutral Nook. **CONTRACTOR**, Adam Mancini. **CONSOLE TABLE FABRICATION**, Bonny Woodworks. **PENDANT LIGHT, RUG**, Etsy. **MIRROR**, CB2. **TABLE LAMP**, Elte Mkt. Vintage **CHAIR**, LC & Kel Interiors. **ART**, Christopher Reyes. **ELECTRICAL**, Major Mack Electrical.

## PLACE MARKER

Sarah placed a custom cabinet between the living and dining areas to demarcate them as separate spaces in the open floor plan. Its vertical silhouette is more compact than a buffet and works well in this small spot. The cabinet harbours heirloom glassware and serving pieces, and also acts as bar. Sarah styled it with mostly vintage pieces for a dynamic effect.

**TABLE, CABINET**, Sarah Birnie Interiors. **END CHAIRS**, France & Son. **SIDE CHAIRS**, Nuevo. **CHANDELIER, RUG**, Etsy. **SCONCES**, West Elm. **DRAPERY FABRIC**, Tonic Living. **DRAPERY SEWING**, H Sewing.



“I wanted to add warmth to the high-contrast space but keep it relatively neutral.”



## SHAPE UP

“This shapely sofa jumped out at me right away,” says the designer. “As the living room is more of a formal area off the dining room, I wanted the sofa to be unique, even sculptural. It is also a nice foil to all the linear elements here.” A funky sconce and vintage record player temper its chic style with a fun, retro feel. “This is a place to sit with a cocktail or a cup of coffee, so having a turntable here seemed like an obvious choice for entertainment.”

**SOFA**, Shelter Furniture. **SCONCE**, Etsy. **ART**, Holly Young.

## LAYERS, NATURALLY

The living room exudes the casual, collected-over-time quality that Sarah and the homeowners desired (read: this doesn't look like it was started from scratch). Natural materials like rattan, wood and leather impart warmth to the existing white walls and black trimmed windows. “Varied textures, vintage pieces and natural materials are what I'm drawn to. I really believe these things bring a room to life,” says Sarah. Drapes soften the mood, while eye-catching abstract art keeps the overall aesthetic feeling chic and curated.

**ART**, Caleb Mahoney. **FLOOR LAMP**, Arteriors. **STOOLS**, Zara Home. **CHAIRS**, France & Son. **COFFEE TABLE**, Home by Seven.







“The woodstove was installed by the previous owners. The new homeowners use it frequently, so I really wanted to make it a focal point and play up the cozy factor.”

## JUST LOUNGING

The TV lounge area, located just off the kitchen, is anchored by an ample sectional. “Big and comfy was the only way to go here,” says Sarah. The squishy cushions and casual coffee table take on a sophisticated air thanks to the gallery wall. “I prefer to use a handful of medium-to-large pieces, rather than lots of smaller ones – it creates a more elevated look,” says Sarah. The articulated sconce layers in a Mid-Century Modern vibe.

**CUSHIONS, RUG, Etsy. COFFEE TABLE DESIGN, Sarah Birnie Interiors. COFFEE TABLE FABRICATION, Bonny Woodworks. White catchall DISH, Mary Ratcliffe.**

## FIRESIDE FLAIR

A custom-made firewood holder has an elongated silhouette to draw the eye up and emphasize the ceiling height. Its contemporary lines and large-scale presence are a creative counterpoint to the tiny woodstove. Monochromatic artwork balances the vignette and, once again, the natural textures and tones of the furnishings impart a warm, organic feel.

**FIREWOOD HOLDER, CUSHION, Etsy. ART above wood stove, Celadon. CHAIR, Structube.**

FOR SOURCES, SEE OUR WORKBOOK



# The NEW WEST

Design innovators Aly Velji and Katie Nelson take a home from empty to exceptional. **TEXT** BETHANY LYTLLE | **PHOTOGRAPHY** KLASSEN PHOTOGRAPHY





T

hough it looks like it was plucked from a lot in California or the Southwest, this desert-modern home with its railings, interior gate-work and metal chandeliers is comfortably situated in Lake Bonavista, Calgary. “The house is a new build, so the clients – a young couple with two little kids – contacted us to make it more personal-looking, and to furnish it top to bottom,” explains Aly Velji who worked in tandem with Katie Nelson on the project. Says Aly: “The big challenge was to ensure the home didn’t look like a showroom.” To this end, a medley of unexpected choices were made to combine iconic silhouettes, such as →

**OPPOSITE & THIS PAGE** “This is an everybody-in space,” says designer Katie Nelson of the newly furnished living room. “Cubby baskets hold the kids’ toys, and feel-good, wear-well textures like leather, linen and honed marble mean upkeep is stress-free.” Striking symmetry in the mirrors, sconces and armchairs is balanced with expressive task lighting. Katie and designer Aly Velji paired earth-toned vessels and a traditional rug with fun, graphic draperies.

**SECTIONAL**, CF Interiors. **LEATHER ARMCHAIRS**, Article. **COFFEE TABLE**, Crate and Barrel. **FLOOR LAMP, SCONCES, VASE** (on coffee table), HomeSense. **THROW PILLOWS**, EQ3. **ART**, Terran McNeeley. **RUG**, Wayfair. **DRAPERY**, custom (design), Tonic Living (fabric). **CUBBY BASKETS**, IKEA.



**BELOW** “The family often has company, so ample seating is key,” says Aly. “But even when it’s empty, sculptural chairs, a raw-edged table, and patterned drapery keep the room engaging to the eye.” For guests who linger at the table, a warm glow is cast by the metal chandelier, which creates dramatic angular shadows on the walls.



**ABOVE & LEFT** A circular mirror installed above the brass-mesh sideboard softens the space, while the sharp shapes of palm fronds are graphic punctuation marks. A gallery wall provides another modern punch. “Throughout the home, there are graphic statements, and this one is a wall of prints from artist Elvia Perrin,” says Aly.



Mid-Century-Modern furnishings, with hits of rich colour and graphic accents. “Rusts, mustards and olives are contrasted with bold prints in black-and-white,” says Aly. And bedroom walls now hint at jungles and larger-than-life gardens. “Murals with flora and fauna are our absolute favourite room-makers right now! They’ve come such a long way,” says

Katie. The design duo also harnessed the power of symmetry and geometry: matching mirrors, graphic palm fronds and sets of baskets may be stylish, but they also bring a sense of order. That’s a definite plus for the parents of two busy young ones who are living life to the fullest – and sometimes messiest – in this modern family home.





*“We wanted the entry to stay wide open and roomy, so the only piece of furniture is the mid-century bench.”*

**LEFT** Filled with meal-time chatter and noisy kids making a run for the backyard, the super-accessible kitchen nook is tucked between the living and kitchen zones. “The space has no walls and tons of light, so we grounded it with the black wishbone chairs,” says Aly. The desert-modern lines of a faux fiddle-leaf fig tree soften the metalwork railings and chandelier.

**CHAIRS, faux TREE,** HomeSense.

**RIGHT** Bursting indoors after a day of fun, lively kids and parents have ample room to drop bags before dashing upstairs or darting down the hallway to the fridge. “We wanted the entry to stay wide open and roomy, so the only piece of furniture is the mid-century bench,” says Aly. Its sapphire-hued upholstery and mustard-yellow pillows are bold, like the minimalist staircase railing and oversized graphic wall art.

**BENCH, RUG,** Wayfair. **ART,** James Wyper. **PILLOWS,** West Elm.

**RIGHT** An active family calls for plenty of tumble-space. “We didn’t want anything fussy,” says Katie. The sprawling linen sectional in the family room is paired with a marble coffee table. The table’s round shape means there are no sharp corners for little ones to crash into. The multi-hued wool rug is blended with a synthetic, so milk spills here are nothing to cry over.







**ABOVE** A vanity in dramatic blue looks rich and graphic. Even better, given this is the home's main bathroom, it's truly family-friendly. Smudges and dirt don't show up easily on the dark vanity, and the countertop is easy to clean. Aly and Katie complemented a pair of linear mirrors by adding in softer lines with the radiant gold vase and warm white accessories.








**LEFT** “Matching a dresser to a room’s nightstands is a no-no in our books, so we wanted something that would coordinate with the rest of the pieces in the space,” says Aly. This dresser with its walnut frame and leather-fronted drawers did the trick. It adds warmth, makes a statement, and provides extra storage for the couple, too. The curves of the mirror offset its angularity.

**DRESSER**, CB2.

**ABOVE** “We wanted the couple’s bedroom to have a boutique hotel vibe, so we started with moody dark wallpaper and a lush linen-upholstered bed,” says Aly. A wall of ripple-fold drapery invites quietude and modern luxury. “Leaning the framed prints against the wall looks more casual,” says Aly.

**HEADBOARD**, Crate and Barrel. **WALLPAPER**, JF Fabrics. **SIDE TABLE**, Wayfair. **LAMP**, HomeSense. Custom **DRAPES**, Aly Velji Design (design); Tonic Living (fabric). **ART**, Lauren McLaughlin. Velvet **PILLOWS**, West Elm. **THROW**, Aly Velji Design.



Thanks to a wall mural, the young daughter's room feels like a little tropical garden. And that delights her, whether she's perched upon the golden pouf, curled up on the swish mid-century rocker, or snuggling with her sleepy-cloud pillow.

**BED, CHAIR,** Wayfair. **WALL MURAL,** Rocky Mountain Decals. **SIDE TABLE, POUF,** HomeSense. **WALL ART,** Etsy. **RUG, PILLOWS,** IKEA. **BEDDING,** West Elm.



◀ Vito metal single **BED**, \$230, Southshore, southshorefurniture.com.



▲ Forest Fairies **WALLPAPER**, \$95 per 23½" x 96" panel, Rocky Mountain Decals, rockymountaindecals.ca.

get the look

► Polyester **CUSHION**, \$20, Bouclair, bouclair.ca.



▼ Ror **ROCKING CHAIR**, \$159, Must Love Furniture, mustlovethefurniture.com.

▲ Casablanca Market **POUF**, \$240, Amazon, amazon.ca.



▲ Graphic 3NC **POSTER** by NaturalColors, US\$42, Society 6, society6.com.



► Metal and marble **SIDE TABLE**, \$100, Bed Bath and Beyond, bedbathandbeyond.ca.





When this dinosaur-loving little boy climbs into bed at night, he climbs into a jungle, too. The mural conjures faraway adventures. The bed frame is house shaped, making it like a home within a home. The bedside table doubles as a stool and is handy when mom or dad come in to read bedtime stories.

**BED**, Wayfair. **WALL MURAL**, Maxwell Fabrics. **SIDE TABLE**, HomeSense. **PILLOWS** (on bed), IKEA and HomeSense.

FOR SOURCES, SEE OUR WORKBOOK



LOOKING FOR DECORATING INSPIRATION?

visit **styleat home.com**



Join the community



# Chic Suite

TEXT CHRISTY WRIGHT  
PHOTOGRAPHY VALERIE WILCOX

Light, bright and a touch of glam was the design direction that took this condo from dark and dated to fresh and feminine.





**OPPOSITE & THIS PAGE** White walls and white oak flooring make for a bright backdrop that begs to be accessorized. In the dining room, designer Emilia Wisniewski started at the top. “I installed beautiful wallpaper on the recessed ceiling,” she says. “It is totally unexpected but makes the space feel special.” Large-scale artwork furthers the textural, watercolour vibe. Curvy lines in the entryway (above) have an organic feel and are a nice break from the lines and angles (bonus: the Lucite table keeps the view to the dining area clear). Metallic 3-D art has a lively effect above a credenza that provides closed storage and can function as a dry bar.

**DESIGN**, Emilia Wisniewski, Studio 1NINE1. Emma Hayes Textiles **CEILING WALLPAPER**, Newwall. **PAINT**, Chantilly Lace OC-65, Benjamin Moore. **CHANDELIER**, **CREDENZA**, Sunpan. Dining **TABLE**, **CHAIRS**, round entryway **MIRROR**, Mitchell Gold + Bob Williams. **METAL ART**, Elte. Entryway **CONSOLE TABLE**, **RUNNER**, CB2. Entryway **VASE**, **BOWL**, **CANDLE-STICKS** (on credenza), West Elm. Entryway decorative **BOX**, **ROUND STOOL**, HomeSense. **ARTWORK**, Reiko.

**L**

ocated in a swish downtown Toronto hotel, this 1,200-square-foot condo has amenities to spare, but the beauty of those perks wasn't reflected in its design. “The original builder's finishes were very dark and masculine,” says designer Emilia Wisniewski of Studio 1NINE1. “They didn't represent the owner, Sabrina, who is stylish and fashion-forward.” An initial plan to upgrade the kitchen and two bathrooms soon morphed into renovating the entire space. “We determined that pulling off the Band-Aid and starting from scratch was the only way to achieve the desired aesthetic,” says the designer. “Sabrina likes bright and a bit of glam so we ran with that.” The resulting meld of special touches, new finishes and fab furnishings is stunning: a comfortable, luxurious space that's reminiscent, not only of its chic hotel setting, but also its elegant owner.



**OPPOSITE** Sabrina often works at the island, so comfort was paramount. “These stools have supportive backs and are upholstered in faux leather, so they’re super easy to take care of and very comfortable,” says Emilia. The linear pendant light’s sleek silhouette echoes the shape of the island and doesn’t compete with the wow-factor chandelier in the adjacent dining area. The pro-look art is actually DIY genius: leftover pieces of wallpaper that Emilia set in gallery-style picture frames.

**KITCHEN MILLWORK**, AyA Kitchens. **EMTEK HARDWARE**, ADH Hardware. **QUARTZ COUNTERTOPS, BACKSPLASH**, K-Stone. **FAUCET**, Brizo Litze. **SINK**, Kohler. **WHITE BOWL**, CB2. **PENDANT LIGHTS**, Robinson Lighting. **STOOLS**, Sunpan. **VASES**, West Elm.

**BELOW** The kitchen’s colour scheme pivoted from builder’s brown to nuanced pale shades. “From the beginning, I knew I wanted a two-tone kitchen,” says Emilia. “I chose wood that had grey undertones and the warm-white on the upper cabinets complements them nicely.” The subtly veined quartz backsplash and island weave in the tones in a quiet, sophisticated way. Contemporary black hardware was chosen for its dramatic and streamlined look.





“The mix of cabinet colours is interesting and layered.”



“I used pink sparingly, so it wouldn’t feel juvenile. Pink is Sabrina’s favourite colour, so we used it in accent pieces.”



**OPPOSITE** A blue velvet sofa and softly folded drapes create rich depth in the living area. “The goal was to have this space feel like a luxurious hotel suite,” says Emilia. “The drapes are faux Dupioni silk, and have drama that completes the room and takes it to that next level.” The gallery wall, showcasing photos of Sabrina’s family and friends, was configured in an offset way for visual interest and to balance a visible A/C vent at the other end of the wall. The coffee table has a linen finish for more tactile appeal, and Emilia loves its rounded shape. “It’s totally different and keeps the space from feeling precious.” Pops of pink, Sabrina’s favourite colour, finish it off.

Custom **SOFA**, Gresham House. **SOFA FABRIC**, custom **CUSHION FABRIC**, Drapery **FABRIC**, Thread-count Inc. **SEWING** of custom **CUSHION, DRAPES**, Drapes by Fae. Picture **FRAMES**, **COFFEE TABLE**, CB2. **FLOOR LAMP**, EQ3. Custom **RUG**, Minster Interiors. Custom **MEDIA UNIT FABRICATION**, Impressions Kitchens. **CHAIR**, Elte. **SIDE TABLE**, Sunpan. Pink and blue **VASES, THROW**, West Elm.



**ABOVE** “This area acts as the sitting room and TV room all-in-one, so I designed millwork that would incorporate the media but look like furniture,” says Emilia. She also layered in more tactile appeal here. “The backer board for the TV is covered with linen, and the backs of the inset shelves are, as well. It ties in nicely with the coffee table’s finish and is another texture to break up the sleekness.” The sculptural armchair parlays curves without taking up a lot of space.





“Clean, modern hardware ties in with the kitchen design.”

**LEFT & BELOW** A small space in the new foyer was earmarked for an incredibly pretty office space that factors in thoughtful details. “The gorgeous wall treatment behind the shelves is actually vinyl wallpaper,” says Emilia. “It’s so much more interesting than a painted wall and exudes a bit of depth.” The desktop is a remnant piece of quartz purchased at a fraction of the regular cost. An upholstered dining chair is a stylish alternative to an office chair and links to the rooms beyond the entryway.

Custom **MILLWORK**, Impressions Kitchens. Custom **MIRROR**, Adanac Glass. **CABINETRY HANDLES**, Riche-lieu. **WALLPAPER**, Phillip Jeffries. Quartz **DESKTOP**, K-Stone. **CHAIR**, Sunpan. Alpaca **THROW, BOWL**, Studio 1NINE1 Shop. White **VASE**, CB2. Blue **VASE**, West Elm. Bench cushion **FABRIC**, Threadcount Inc. Cushion **SEWING**, Drapes by Fae.

**OPPOSITE** Emilia reimagined the small den near the entryway and kitchen as a fabulous front foyer brimming with stylish storage options. “The previous setup lacked closet space and it sort of lacked purpose,” she says. “I designed custom millwork to create the look of a grand hotel lobby and give Sabrina ample storage for coats and shoes, along with a designated space for guests’ coats.” There’s even a full-length mirror and bench for putting on shoes.







“These glass panels allow so much light into the ensuite.”





**THIS PAGE** The bedroom's wallpaper needs to be touched to be fully appreciated. "It has actual quartz crystals in it so there is this wonderful texture and a very subtle sheen," says Emilia. "This wall is over 14 feet long so it needed something special with some 'wow' happening." The tufted headboard strikes a soft note that's anchored by wide white-ash bedside tables with champagne-bronze finishes. The Lucite and brass lamps are a designer-favourite. "They look so sculptural that we really didn't need to add anything else."

**WALLPAPER**, Phillip Jeffries. **BED**, Elte. **BEDDING**, Au Lit Fine Linens. **NIGHT TABLE**, Geovin. **LAMP**, Flow Décor. **THROW**, Studio 1NINE1 Shop. **BENCH**, Sunpan.

**OPPOSITE** These bespoke doors are more than just a pretty addition to the primary bedroom: Emilia had them fitted with glass panes to usher light into the windowless ensuite. She then had them painted a soft silver and added glamorous crystal knobs on brass backplates – both feel especially feminine and the right departure from the contemporary black in the main rooms.

Bathroom **DOORS**, 1925Workbench. **DOORKNOBS**, Emtek. Flowerhead III by Vanessa Paxton **ARTWORK**, Citizen Atelier. Custom **FRAMING**, On the Wall Framing.



“In small bathrooms, the more storage we can squeeze in, the better. The custom vanity holds a ton, so the little cabinet on the wall is just for overflow.”

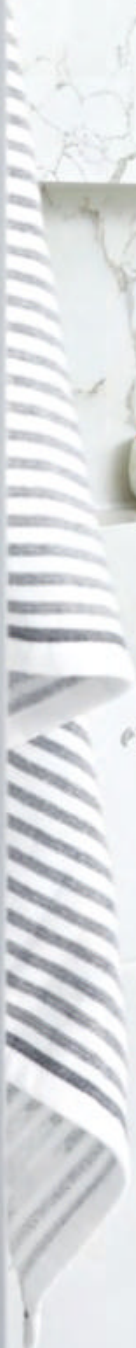
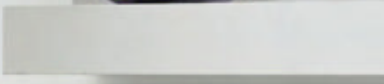


**THIS PAGE** Gorgeous glamour was the mandate for Sabrina’s bathroom and it’s evident in every detail down to the hardware. “We reserved all the brass for this bathroom!” says Emilia. “I held off using it in the other rooms, so when it came to Sabrina’s ensuite, we just totally went for it! Brass is so timeless and chic and it works so well against the beautiful light dolomite honed marble tiles.” She included a home spa kit and bench in the shower, a luxurious touch that offers a place to sit and enjoy a steam treatment. The custom shallow cabinet makes use of the empty wall space above the toilet and provides extra storage.

All **TILES**, Weston Tile. **SHOWER DOOR**, Doors & More. Shower, bath **FIXTURES**, Brizo. Therma-sol **SHOWER SPA**, PlumbingOnline. Aria Voce **BATHTUB**, Fleurco. **ARTWORK**, Society 6. **FRAME, MIRROR**, CB2.

**OPPOSITE** A backdrop and platform of quartz highlight the sleek vessel tub. “I wanted drama here and minimal grout lines, so chose this beautiful quartz with lots of subtle veining for movement.” A round mirror references the tub’s curves and rests above a floating shelf that extends to the narrow cupboard above the toilet. “It was tricky to design and I love that it is one unit. The artwork was Sabrina’s request – she loves Audrey! – and it works perfectly here.”





# LABOUR OF LOVE



Perched on a hill in picturesque Paris, Ont., an 1883 house gets a redo for the ages. **TEXT** BETHANY LYTTLE | **PHOTOGRAPHY** ROBIN STUBBERT



“We loved it the first time we laid eyes on it,” says Jen Dault, of the house she and husband Tom Dault transformed with old-fashioned elbow grease and a new-fashioned take on going vintage. “We already had a passion for antiques, but we were living in a new-build, which wasn’t the best canvas for our pieces,” says Tom. When they saw the century-plus house, they knew they’d found home. Their collection of characterful pieces and efforts to preserve the original architecture imbued the place with history, mystery and moody style. This required persistence (walls were painted four times before the right grey was found), ingenuity (Tom painstakingly rewired antique light fixtures) and patience – which, they admit, was sometimes lacking. “I was so eager to get the kitchen done, I tried to take down the upper cabinets myself,” says Jen, laughing. “Well, I’m a small girl, so when the microwave cabinet fell off the wall, I couldn’t move it and ended up holding it in my arms for an hour until Tom got home!” In the end, it was worth it. “We wanted a home that was in tune with who we are,” says Tom. We like the sound – and look – of that!

## Small Town Welcome

Scarlet the wonder-dog loves curling up on the secondhand wicker furniture on the front porch. We bet she takes the sofa and leaves the chairs for homeowners Jen and Tom Dault. An antique rocker suits the yesteryear feel of the wraparound veranda, as does the dresser, which doubles as storage. Evenings are warmed by cozy throws and the soft glow of lantern light. Flour sacks for the curtain and pillow covers add a country feel.

**DRESSER**, Objekts. **WREATH**, Home Depot. **LANTERNS**, Southwork’s Antiques. **THROW**, Bowles Hilltop Antiques. **WHEAT SHEAF**, Tattered and Torn.

“AS WE SIT AND TALK AT DINNER, THE PIECES ON THE WALL BRING BACK MEMORIES OF THE PLACES WHERE WE FOUND THEM.” — Jen Dault



## Bird's-Eye View

Conversation starters are everywhere in the living room: this taxidermy toucan hails from the now-defunct Niagara Falls Museum. “It used to be rented out as a movie prop, so it’s kind of famous,” says Tom. A jungle-themed mural hangs behind.

**CHAIRS** (flanking toucan), Tattered and Torn. **TOUCAN** (on pedestal), Cabinet of Curiosities. **WALLPAPER**, Amsterdam Element, Etsy.

## Centuries of Style

Hailing from a convent, the clean lines of the antique dining table appealed to Jen, who says, “it works with the modern bench and chairs.” The fireplace tiles are original, but the antique mantel was added by Tom.

**METAL CHAIRS**, Mikga. **LIGHT FIXTURE**, Aberfoyle Antique Market. **SHEEPSKIN**, HomeSense. **EAGLE** (over doorway), Days Gone By Antiques. **MIRROR**, Southwork’s Antiques. **HEAD BUST VASE/PLANTER**, Bird and Be Vintage.



# Persons of Interest

“The portraits aren’t actual relatives, but we think of them as adopted family members,” says Tom, of the ornately framed collection symmetrically installed above the 10-foot-long leather sofa. The quintessential chesterfield-style sofa sets a commanding presence and was the first item moved into the room. Vintage luggage serves as side and coffee tables. Tom painted the 11-foot-high ceiling a dark grey and added the modern incandescent pendant to make the room feel warmer.

Kensington **SOFA**, RH. **CEILING LIGHT**, The Kings Bay. **WALL PAINT**, Normandie RL4349, Ralph Lauren. **CEILING PAINT**, Pencil Point PPU18-2, Behr. **PORTRAITS** (from left to right), Rhode Island Internet Consignment and Sales (pair, far left and right); Good Old Days Antique Auction, (pair, second from left); Old Town Hall Auctions (centre); Christie Antique and Vintage Show (pair second from right); Waterford Antique Market (right). **VINTAGE SUITCASES**, Christie Antique & Vintage Show (top); Strathroy Antique Mall (middle two); Market Road Antiques, Southworks Antiques (bottom). **TABLE LAMP**, Southwork’s Antiques. **CUSHIONS**, HomeSense.



▼ Emika **CUSHION**, \$119,  
Mobilia, mobilia.com.



▲ **CEILING MEDALLION**, \$60,  
Home Depot, homedepot.ca.

► Cavallini & Co  
wood **FRAME**,  
\$77, Amazon,  
amazon.ca.



get the look

◀ Hendrix  
**PENDANT**, \$308,  
Maillé Style,  
maillestyle.com.



▲ Chesterfield leather **SOFA**, US\$4,600,  
Silver Coast, silvercoastcompany.com.

► Charlton  
Home's three  
chest **SUITCASES**,  
\$520, Wayfair,  
wayfair.ca.



▲ Joshagan Persian **CARPET**, \$550, ecarpetgallery.com.

“WE WANTED EACH ROOM TO HAVE ITS OWN CHARACTER, YET BE CONNECTED IN SOME WAY. THE PERSIAN RUGS AND ANTIQUES PROVIDE THAT CONNECTION.” — Tom Dault



## A Place in Time

Unfitted painted and stained wood furniture suits a home of this age. “We like the weathered-and-worn look of older furnishings, and the feeling that comes with surrounding yourself with pieces that have their own history,” Jen says.

## Shelf Life

“We wanted a mix of style and function in the kitchen,” says Jen. Open shelves hold everyday dishes and display a wide array of collectibles, including antique ironstone, crockery, and mortars and pestles, some of which are nearly 100 years old. The IKEA cabinetry is fitted with cast-iron drawer pulls for heft and a sense of age.

**CABINETS, COUNTERTOP, IKEA.** **CABINETS HARDWARE,** Aberfoyle Antique Market. **OPEN SHELVES,** Atefacts Salvage & Design. **TABLE,** Southwork’s Antiques. **ANTIQUA CABINET,** 1871 Farmhouse. **BACKSPLASH TILE,** American Olean. **WALL PAINT,** Pencil Point PPU18-2, Behr. **DISHWARE** (on shelves), Royal Dalton; Tattered and Torn (ironstone); Cabinet of Curiosities (Victorian egg collection); St. Jacob’s Antiques Market (stoneware crocks); Freelon Antique Market (mortars and pestles). **CEILING LIGHT,** Waterford Antique Market.





CHOICE ENGLISH  
BISCUITS & WAFERS







## Sea Change

“The first thing we bought for this room was the whale. This seemed like such a cool place for him,” says Jen, of the wood carving above the door. The oak cabinet stows towels and has its original wavy glass. Nautical art with a nostalgic feel hangs above the new toilet, and an antique bottle collection gets pride of place in a wall cabinet. “It gives it an apothecary look,” Jen says. She tiled the shower walls herself; a deep soaker tub adds modern clean lines for contrast.

**DOOR PAINT**, Asphalt Gray N520-6, Behr. **FLOOR TILE**, Merola Tile Arte Grey, Home Depot. **WHALE**, Christie Antique and Vintage Show. **MIRROR** (above cabinet by toilet), BuyRite Antiques & Collectibles. **NAUTICAL SHIP ART**, Southwork’s Antiques & Collectibles (bottom); Objekts (top). American Olean **TILE**, Ove Decors **TUB**, Lowe’s.

FOR SOURCES, SEE OUR WORKBOOK

“WE HID A BLUETOOTH SPEAKER IN THE ANTIQUE GRAMOPHONE HORN, SO YOU CAN HAVE A BATH LISTENING TO MUSIC THAT SOUNDS REALLY OLD.” — Tom Dault

# *Fall Feasting, Family-Style*

RECIPES LYNN CRAWFORD AND LORA KIRK  
PHOTOGRAPHY MAYA VISNYEI

SWEET POTATO AND LENTIL  
COCONUT THAI CURRY

*Hearth & Home: Cook, Share and Celebrate Family-Style* is your must-have cookbook this fall. Some of the recipes by chefs Lynn Crawford and Lora Kirk are ideal for easy weeknights, others are best for weekend gatherings. Our preview will help you prep your own flavourful family-style feast!

## SWEET POTATO AND LENTIL COCONUT THAI CURRY

SERVES 4

### Red Curry Paste

- 12 dried Kashmiri chilies
- 2 tsp ground cumin
- 1 tsp ground coriander
- 1 tsp smoked paprika
- 3 cloves garlic, chopped
- 2 shallots, chopped
- 1 tbsp chopped peeled fresh ginger
- 1 stalk lemongrass (white part only), chopped
- 3 tbsp olive oil, divided
- ¼ cup fresh cilantro leaves
- 2 tsp shrimp paste
- Zest and juice of 1 lime

### Curry

- 2 tbsp olive oil
- 1 white onion, finely diced
- 1 tbsp ground turmeric
- 1 tbsp ground cumin
- 1 tbsp minced peeled fresh ginger
- 1 tbsp minced garlic
- 2 cans (14 oz/400 mL each) full-fat coconut milk
- 2 cans (14 oz/398 mL each) diced tomatoes
- 2 large sweet potatoes, peeled and cubed
- 1 can (14 oz/398 mL) lentils, drained and rinsed

Kosher salt and freshly ground black pepper

- ½ cup fresh cilantro leaves, chopped, more for garnish

Zest and juice of ½ lemon

### Red Curry Paste

Place the chilies in a medium bowl, cover with



## CORN, ZUCCHINI AND CHEDDAR SAUTÉ

(PAGE 102)

boiling water and set aside to soften, about 15 minutes. Drain the chilies. Heat a small skillet over medium-high heat. Add the cumin, coriander and paprika and cook, stirring together, until fragrant, about 1 minute. Remove from the heat. In a food processor, combine the chilies, garlic, shallots, ginger, lemongrass and 2 tablespoons of the olive oil and process until smooth. Add the toasted spices, cilantro, shrimp paste and lime zest and juice, and continue to process until smooth. Use immediately or spoon the curry paste into a jar, cover with a thin layer of the remaining 1 tablespoon of olive oil, cover with a lid and store in the refrigerator for up to 2 weeks.

### Curry

Heat the olive oil in a large pot over medium-high heat. Add the onion and cook, stirring frequently, until softened, 3 to 4 minutes. Add the turmeric, cumin, ginger, garlic and 2 tablespoons of the red curry paste. Cook, stirring, until fragrant, 1 to 2 minutes. Add the coconut milk and tomatoes and bring to a boil. Add the sweet potatoes and lentils, then season to taste with salt and pepper. Cover and cook for 45 minutes or until the sweet potatoes are soft. Remove from the heat and stir in the cilantro and lemon zest and juice. Ladle into a large serving dish and garnish with more cilantro. Serve over steamed jasmine rice or couscous.

---

## CORN, ZUCCHINI AND CHEDDAR SAUTÉ

---

SERVES 4 TO 6

- 2 tbsp olive oil
- 2 cups fresh corn kernels (from 4 cobs)
- 2 cups diced zucchini
- 2 tbsp chopped shallots
- ½ red Fresno chili, thinly sliced
- 2 tsp minced garlic
- 1 tsp Old Bay Seasoning (optional)
- ½ cup heavy (35%) cream
- ½ cup grated aged white cheddar cheese
- 2 tbsp chopped fresh flat-leaf parsley
- Kosher salt and freshly ground black pepper

Heat the olive oil in a large skillet over medium-high heat. Add the corn, zucchini, shallots, chili, garlic and Old Bay Seasoning (if using) and sauté until the corn is tender, about 10 minutes.

Stir in the cream and cook, stirring occasionally, until slightly thickened, about 3 minutes. Add the cheddar and parsley and stir until the cheese has melted. Season to taste with salt and pepper. Transfer to a serving bowl.

---

## ASADO GRILLED FLANK STEAK WITH STEAK SAUCES

---

SERVES 4 TO 6

- ¼ cup soy sauce
- 2 tbsp Dijon mustard
- 2 tsp fresh thyme leaves
- 1 tsp smoked paprika
- 2 cloves garlic, minced
- 1 flank steak (2 lbs/900 g)
- 3 (to 4) tbsp Sebastian & Co Charcoal Rub (or season steak with kosher salt and freshly ground black pepper)

### For Serving

Chimichurri Sauce (store-bought)

AP Steak Sauce (store-bought)

In a large bowl, stir together the soy sauce, mustard, thyme, paprika and garlic. Add the flank steak and turn to thoroughly coat with the marinade. Cover with plastic wrap and marinate in the refrigerator for at least 1 hour or up to 4 hours.

Prepare the grill for direct cooking over high heat.

Remove the steak from the marinade and discard the marinade. Season the steak with half of the charcoal rub. Grill the steak, without moving it, for 5 to 8 minutes, then turn and sear for another 5 minutes or until desired doneness is reached. Remove the steak from the grill and let rest for 10 minutes.

Sprinkle the remaining charcoal rub on both sides of the steak. Thinly slice the steak against the grain. Transfer to a serving platter and serve topped with Chimichurri sauce and AP steak sauce.

---

## DUKKAH TROUT WITH HUMMUS AND TOMATO MINT CHUTNEY

---

SERVES 4 TO 6

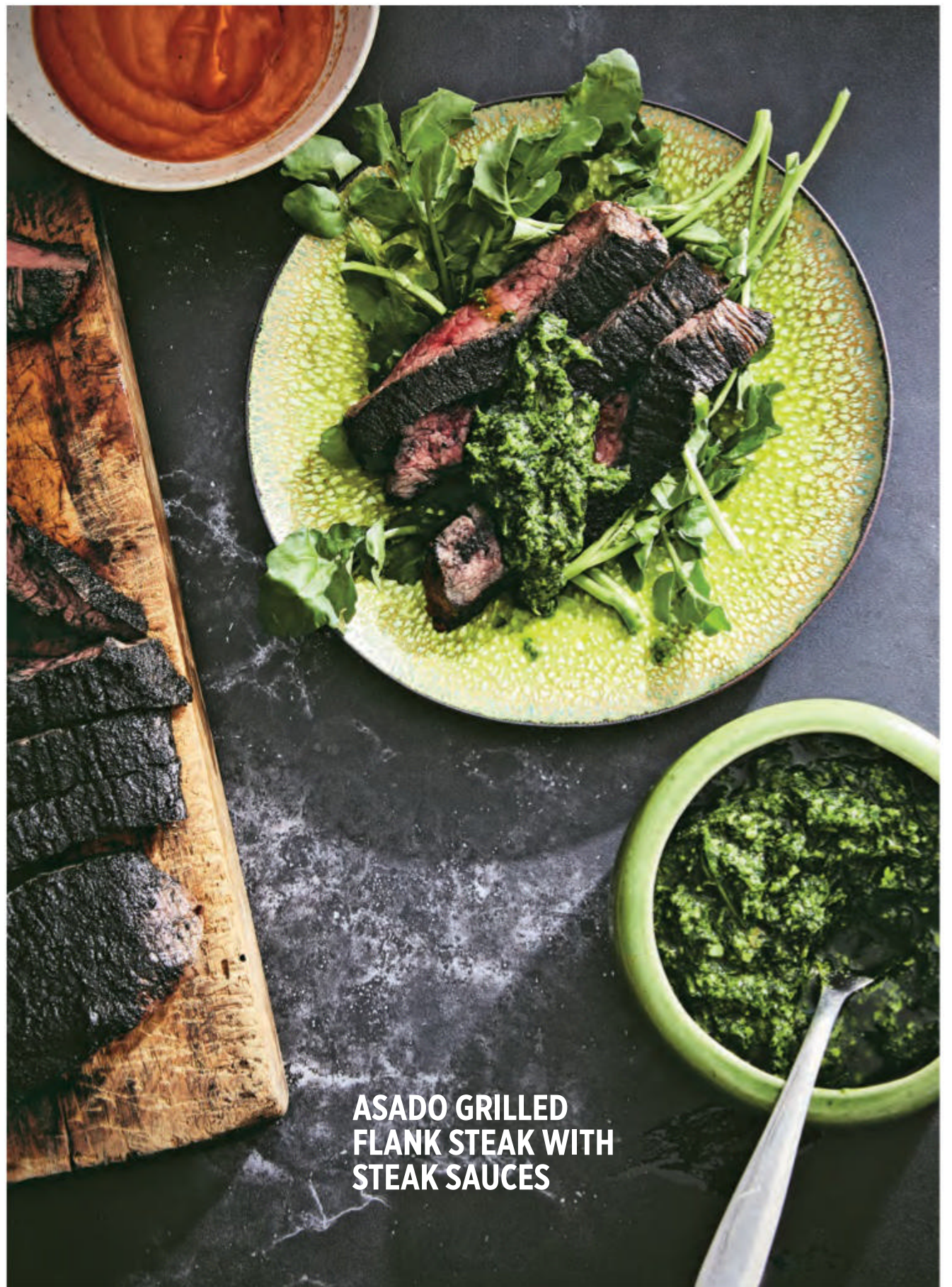
### Herb Sauce

- 1 cup loosely packed fresh cilantro leaves
- 1 cup loosely packed fresh flat-leaf parsley leaves

- 1 cup loosely packed fresh mint leaves
- 1 (1-inch) piece peeled fresh ginger
- Zest and juice of 1 lemon
- 1 tbsp apple cider vinegar
- 3 tbsp white miso
- 3 tbsp tahini
- 2 tbsp olive oil
- 1 tbsp honey
- Kosher salt and freshly ground black pepper

### Hummus

- 2 cups canned chickpeas, drained and rinsed
- 2 large cloves garlic, roughly chopped
- ¼ cup tahini
- ¼ cup olive oil



**ASADO GRILLED  
FLANK STEAK WITH  
STEAK SAUCES**

Zest and juice of 1 lemon

Kosher salt and freshly ground black pepper

### Tomato Mint Chutney

3 tbsp raisins

3 tbsp apple cider vinegar

2 tbsp canola oil

2 shallots, thinly sliced

2 cloves garlic, thinly sliced

2 tsp grated peeled fresh ginger

1 tbsp tomato paste

1 cup tomato purée

1 medium tomato, diced

¼ cup sun-dried tomatoes, thinly sliced

2 tbsp brown sugar

1 cup cherry tomatoes, cut in half

½ cup roughly chopped fresh mint leaves

Kosher salt and freshly ground black pepper

### Dukkah Trout

4 (to 6) skinless trout fillets (5 to 6 oz/140 to 170 g each)

Kosher salt and freshly ground black pepper

½ cup dukkah spice (store-bought)

3 tbsp olive oil

Fresh mint leaves, for garnish

### Herb Sauce

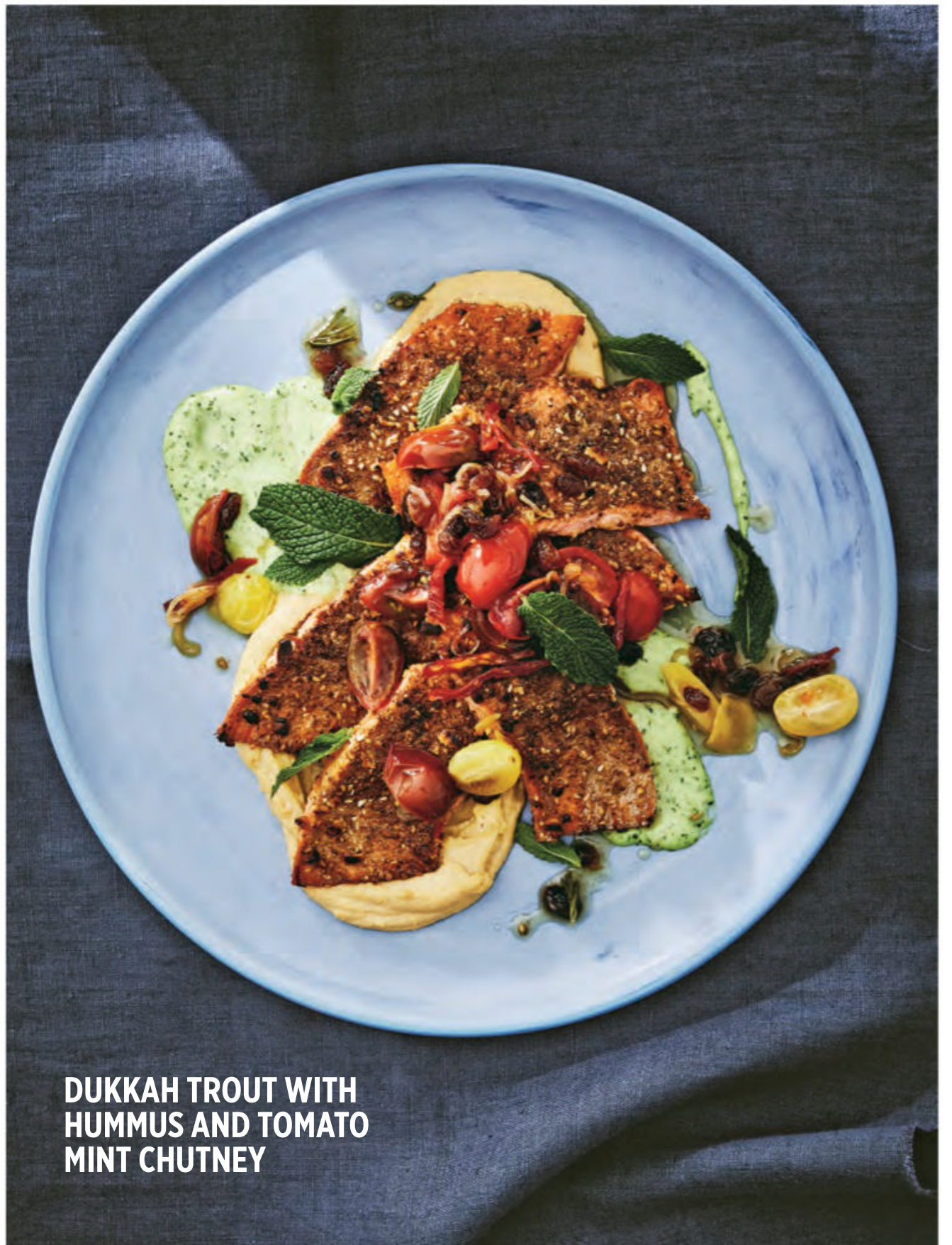
Place the ingredients in a blender. Purée until very smooth, adding a little water if necessary. Season with salt and pepper. Use immediately or store in an airtight container in the refrigerator for up to 2 weeks.

### Hummus

Place the chickpeas and garlic in a food processor and blend until a rough paste is formed. With the machine running, add the tahini, olive oil, lemon zest and juice, and process until silky smooth. Season with salt and pepper. Use immediately or store in an airtight container in the refrigerator for up to 1 week.



Find more recipes to share in meals with loved ones in *Hearth & Home* by Lynn Crawford and Lora Kirk, Penguin Canada, \$30.



## DUKKAH TROUT WITH HUMMUS AND TOMATO MINT CHUTNEY

### Tomato Mint Chutney

In a small bowl, combine the raisins and apple cider vinegar. Let stand until plumped, about 10 minutes. Meanwhile, in a medium saucepan, heat the canola oil over medium heat. When the oil is hot, add the shallots, garlic and ginger and cook, stirring occasionally, until softened and just starting to brown, about 5 minutes. Add the tomato paste and cook, stirring, until the vegetables are evenly coated, about 1 minute. Add the tomato purée, diced tomato, sun-dried tomatoes, brown sugar and the raisins and their vinegar. Bring to a boil over high heat, then reduce the heat to medium and simmer, stirring frequently, until thickened, about 15 minutes. Stir in the cherry

tomatoes and mint. Season with salt and pepper. Remove from the heat and let cool.

### Dukkah Trout

Season the trout with salt and pepper and coat both sides of each fillet generously with 2 tablespoons of the dukkah spice. Heat the olive oil in a large nonstick skillet over medium heat. When the oil is hot, lay the fish in the pan and cook, turning once, until golden brown and the fish flakes easily with a fork, 3 to 4 minutes per side.

Spread the hummus and herb sauce on opposite sides of a serving platter. Transfer the fish on top of the sauces and spoon the tomato mint chutney over the fish. Garnish with mint leaves.

# SOURCE GUIDE

Where to find the products featured on our pages.

**1925Workbench**  
1925workbench.com

**A**  
**Aberfoyle Antique Market**  
aberfoyleantiquemarket.com

**Adam Mancini**  
manciniandson.com

**Adanac Glass**  
adanacglass.com

**ADH Fine Hardware**  
adhhardware.com

**Altamarea**  
altamareabath.it

**Aly Velji Designs**  
alyveljidesigns.com

**Amazon**  
amazon.ca

**Ambienti Design**  
ambienti.ca

**American Olean**  
americanolean.com

**Artefacts Salvage & Design**  
artefacts.ca

**Artemano**  
artemano.com

**Arteriors**  
arteriorshome.com

**Article**  
article.com

**At Home**  
athome.com

**Atmosphere Interior Design Inc.**  
atmosphereid.ca

**Au Lit Fine Linens**  
aulitfinelinens.com

**AyA Kitchen and Bath**  
ayakitchens.com

**B**  
**Batimat**  
batimat.net

**Bed Bath and Beyond**  
bedbathandbeyond.ca

**Behr**  
behr.ca

**Benjamin Moore**  
benjaminmoore.ca

**Bird and Bee Vintage**  
birdandbeevintage.com

**Bouclair**  
bouclair.ca

**Boutique Kozy**  
boutiquekozy.ca

**Bowles Hilltop Antiques & Vintage**  
bowleshilltopantiques.com

**Bowring**  
bowring.com

**Box Workshop Design Build Studio**  
box-workshop.com

**Brizo**  
brizo.com

**Brunschwig & Fils**  
kravet.com

**Buk & Nola**  
buknola.com

**C**  
**Cabinet of Curiosities**  
cabinetofcuriosities.ca

**Caesarstone**  
caesarstone.ca

**Caleb Mahoney**  
calebmahoney.com

**Canadian Tire**  
canadiantire.ca

**Casa Luca**  
casaluca.com

**Cavallini & Co.**  
cavallini.com

**CB2**  
cb2.ca

**Celadon Art**  
celadonart.com

**Celerie Kemble**  
kembleinteriors.com

**Centura Tiles**  
centura.ca

**Ceragres**  
ceragres.ca

**CF Interiors Rug**  
cfinteriors.ca

**Christie Antique & Vintage Show**  
christieshow.ca

**Christopher Reyes**  
christopherreyes.com

**Cindy B Décor Interior Design**  
cindybdecor.com

**Ciot**  
ciot.com

**Citizen Atelier**  
citizenatelier.com

**Club Piscine Super Fitness**  
clubpiscine.ca

**Cornerstone Home**  
cornerstonefurniture.ca

**Crate and Barrel**  
crateandbarrel.ca

**D**  
**Dash & Albert**  
annieselke.com

**Dinec**  
dinec.com

**Doors & More**  
doorsandmore.ca

**Drapes by Fae**  
drapesbyfae.com

**E**  
**Ecarpet Gallery**  
ecarpetgallery.com

**Elte**  
elte.com

**Elte Mkt**  
eltemkt.com

**Emma Hayes Textiles**  
emmahayes.co.nz

**Emtek**  
emtek.com

**EQ3**  
eq3.com

**Erin Armstrong**  
erinarmstrongart.com

**Etsy**  
etsy.com

**F**  
**Fiori Oakville**  
fiorioakville.com

**Fleurco**  
fleurco.com

**FlowDécor Contemporary Lighting**  
flowdecor.com

**France & Son**  
franceandson.com

**Freelton Antique Market**  
freeltonantiquemall.com

**G**  
**Geovin Furniture Inc.**  
geovin.com

**Global Views**  
globalviews.com

**Good Old Days Antique Auction**  
goodolddays-auctions.com

**Green Gables Furniture**  
greengablesfurniture.com

**Gresham House Furniture**  
greshamhousefurniture.com

**H**  
**H Sewing Custom Drapery**  
hsewingdrapery.com

**H&M Home**  
hm.com

**HanStone Quartz Countertops**  
hanstone.ca

**Heart's Content Gardens**  
heartcontentgardens.ca

**Holly Young Art**  
hollyyoungart.ca

**Home Depot**  
homedepot.ca

**HomeSense**  
homesense.ca

**House of Rohl**  
houseofrohl.com

**Hudson Valley Lighting**  
hudsonvalleylighting.hvlgroup.com

**I**  
**Ico Bath**  
icobath.com

**Igné Ferro**  
townandcountryfireplaces.com



**IKEA**  
ikea.ca

**Impressions Kitchens**  
impressionskitchens.com

**Interiors by Odette Design Group**  
interiorsbyodette.com

**J**  
**James Wyper**  
jameswyper.com

**Jazzy Design**  
jazzyfurniture.com

**JC Cordeau Cabinets**  
jccordeau.com

**JF Fabrics**  
jffabrics.com

**Jodie Rosen Design Inc.**  
jodierosen.com

**John-Richard**  
johnrichard.com

**Jonathan Adler**  
jonathanadler.com

**K**  
**K-Stone Quartz Surface**  
kstonequartz.com

**Kelly Wearstler**  
kellywearstler.com

**Kohler Co.**  
kohler.ca

**Kravet Canada**  
kravet.com

**L**  
**LaLOO Accessories**  
laloo.ca

**LC & Kel Interiors**  
lcandkel.com

**Leftbank Art**  
leftbankart.com

**Linen Chest**  
linenchest.com

**Lowe's**  
lowes.ca

**Luminaire Paul Grégoire**  
paulgregoire.com

**M**  
**Macucina Cabinets & Living Space**  
macucina.ca

**Made Goods**  
madegoods.com

**Maillé Style**  
maillestyle.com

**Majestic Cabinets**  
majesticcabinetinc.com

**Manor Interior Design Inc.**  
manorinteriordesign.com

**Mario Januario Design**  
mariojanuario.ca

**Market Road Antiques**  
marketroadantiques.shop

**Mary Ratcliffe Studio**  
maryratcliffe.studio

**Maxwell Fabrics**  
maxwellfabrics.com

**Michelle Hurley Design**  
michellehurleydesign.com

**Mikga**  
mikga.com

**Minster Interiors Inc.**  
minster.ca

**Mirror Image Home**  
mirrorimagehome.com

**Mitchell Gold + Bob Williams**  
mgbwhome.com

**Mobilia**  
mobilia.com

**MSI Surfaces**  
msisurfaces.com

**Muskoka Living Interiors**  
muskokaliving.ca

**Must Love Furniture**  
mustlovetofurniture.com

**Must Société**  
mustersociete.com

**Muti Kitchen & Bath**  
mutikb.com

**N**

**Newwall Wallcoverings**  
newwall.com

**Nuevo**  
nuevoliving.com

**O**  
**Objekts**  
objektsstore.com

**Old Town Hall Auctions**  
oldtownhallauctions.com

**Oleander Floral Design**  
oleander.ca

**On the Wall Art and Framing**  
@onthewallframing

**Osborne & Little**  
osborneandlittle.com

**Ove Decors**  
ovedecors.com

**P**  
**Patty Xenos Design**  
pxdi.com

**Phillip Jeffries Wallcoverings**  
phillipjeffries.com

**Plomberie Instal Précision**  
instalprecision.ca

**PlumbingOnline**  
plumbingonline.ca

**R**  
**Ralph Lauren**  
ralphlauren.com

**RH**  
rh.com

**Rhode Island Internet Consignment and Sales Inc.**  
riicsinc.com

**Richardson Lighting**  
richardsonlighting.com

**Richelieu Hardware**  
richelieu.com

**Robinson Lighting & Bath**  
robinsonco.ca

**Rocky Mountain Decals**  
rockymountaindecals.ca

**Rona**  
rona.ca

**Royal Doulton**  
royaldoulton.com

**S**  
**Sabrina Albanese Design**  
sabrinalbanese.com

**Samsung**  
samsung.com

**Sarah Birnie Interiors**  
sarahbirnie.com

**Schumacher**  
fschumacher.com

**Serge Mouille**  
sergemouille.com

**Shelter Furniture**  
shelterfurniture.ca

**Sicis**  
sicis.com

**Silver Coast**  
silvercoastcompany.com

**Sobey's**  
sobey.com

**Society 6**  
society6.com

**Southshore**  
southshorefurniture.com

**Southwork's Antiques & Collectibles**  
southworksantiques.com

**St. Jacob's Antiques Market**  
stjacobsantiquemarket.com

**Stacy Garcia, Inc.**  
stacygarciainc.com

**Stone-Tile**  
stone-tile.com

**Strathroy Antique Mall**  
strathroyantiquemall.com

**Structube**  
structube.com

**Studio 1NINE1**  
studio1nine1.com

**Sunpan**  
sunpan.com

**Symbiose Design**  
symbiose-design.ca

**T**  
**Target**  
target.com

**Tattered and Torn**  
905-973-8516

**Terran McNeeley**  
terranmcneely.com

**The Kings Bay**  
thekingsbay.com

**Thermasol**  
thermasol.com

**Threadcount Textile & Design Inc.**  
threadcountinc.com

**Tonic Living**  
tonicliving.com

**U**  
**Universal Lighting**  
greatlighting.com

**Urban Barn**  
urbanbarn.com

**V**  
**VdeV**  
vdevmaison.com

**Véronneau**  
veronneau.com

**Victoria & Albert**  
vandabaths.com

**Visual Comfort**  
visualcomfort.com

**W**  
**Waterford Antique Market**  
waterfordantiquemarket.com

**Wayfair**  
wayfair.ca

**Wedgwood**  
wedgwood.com

**West Elm**  
westelm.com

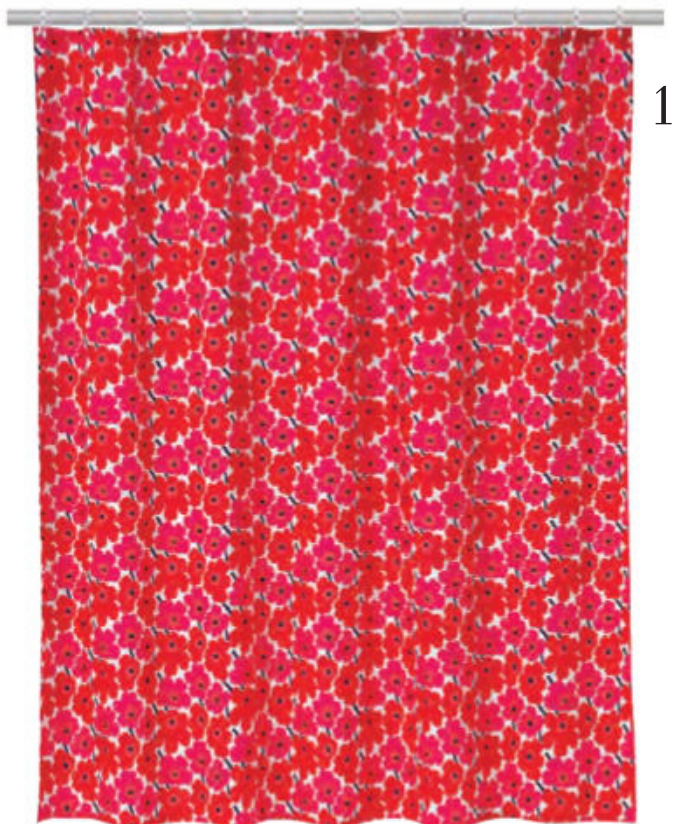
**Weston Tile**  
westontile.com

**Wetstyle**  
wetstyle.ca

**Y**  
**Yummi Candles**  
yummicandles.ca

**Z**  
**Zara Home**  
zarahome.com

**Zone**  
zonemaison.com



1



2



3

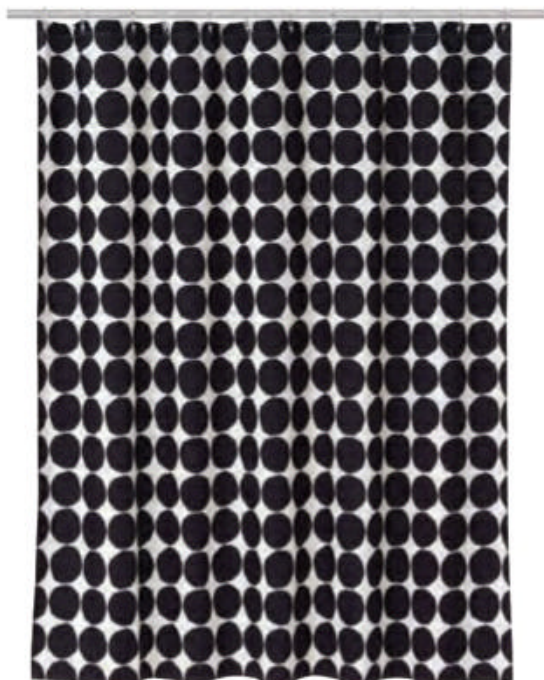
# 8 splashy SHOWER CURTAINS



4



8



5



6



7

Soak up some style: there's no easier way to add pattern and colour to the bathroom.

1 Marimekko's Mini Unikko, \$65, EQ3, eq3.com. 2 Alamode Nevada, \$38, Home Depot, homedepot.ca. 3 Leilani tropical, \$110, CB2, cb2.ca. 4 Simply Essential Engineered Floral, \$24, Bed Bath and Beyond, bedbathandbeyond.com. 5 Marimekko's Pienet Kivet, \$100, Wayfair, wayfair.ca. 6 Beige and black striped, \$30, H&M Home, hm.com. 7 Amazon Basics Tropical, \$33, Amazon, amazon.ca. 8 Jonathan Adler's Ripple, \$154, The Modern Shop, themodernshop.com.



# Nourish your hair FROM WITHIN — THE SWEDISH WAY

## Hair Volume™

Hair Volume™ by New Nordic in Sweden is today the world's best-selling hair nutrient supplement. Hair Volume has received numerous international beauty awards. It contains key hair nutrients like biotin, silicon, and a unique apple extract, with procyanidin B2 growth factors.

With just one tablet a day, Hair Volume helps nourish your hair follicles from within, to help reduce hair shedding while promoting beautiful, healthy and full hair.



## Hair Gro™

Hair Gro™ contains many of the same ingredients as Hair Volume but adds a patented and clinically proven tocotrienol complex, extracted from palm fruit. These ingredients have shown to significantly promote new hair growth and increased hair count, in 2 published clinical trials.



## Hair Volume™ Gummies

Hair Volume Gummies™ contain the same hair health promoting ingredients as the tablet, but in a delicious apple flavoured gummy. 2 gummies a day is all you need to keep your hair looking its best.



Delicious  
Apple Flavoured  
Gummy.



\* Based on our Clinical Hair Volume study of which 87% of people would recommend the product Hair Volume. Reference: "Evaluation of a functional food on the quality of the hairs on a panel of volunteers", Study 15E3405, Longjumeau, France. 12.Oct.2018



For Information & Advice:  
CALL US:  
1-877-696-6734  
ONLINE SHOP:  
www.newnordic.ca

**\$399**  
GRAYSON  
dining table

**\$109**  
LEOPARD  
dining chair

**Low  
Prices**

AMAZING STYLES

With 75 stores across the country, Structube is the shopping destination to discover a wide selection of modern and trendy furniture offered at exceptionally low prices.\*

\*Structube reserves the right to make any price changes without prior notice.



**FREE DELIVERY**

Enjoy free delivery with orders over \$299.\*  
Visit [structube.com](https://www.structube.com) for more details.

\*Certain conditions may apply.